



City of Dayton

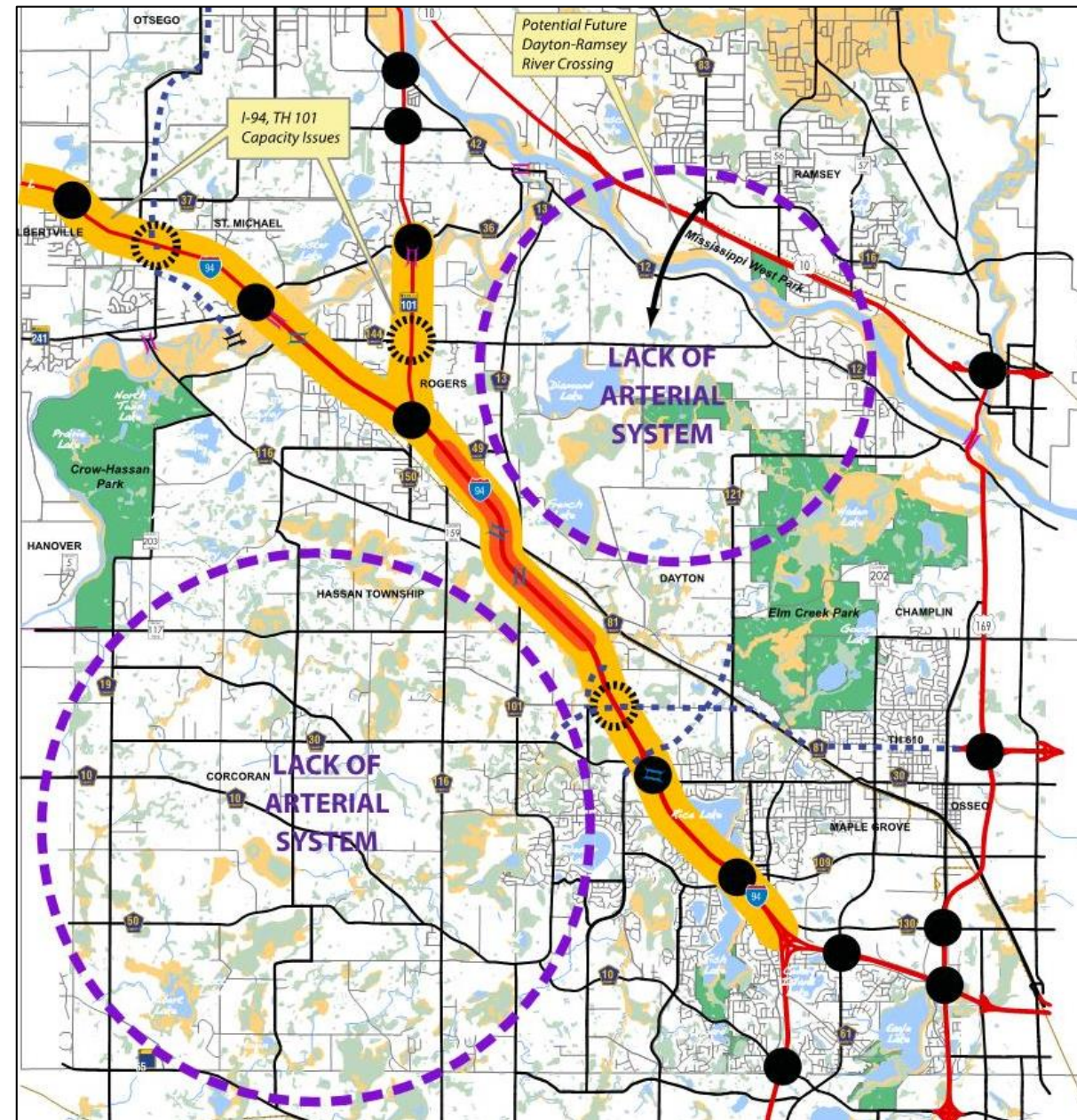
# Dayton Parkway Corridor Study

Council Update Presentation – April 9, 2019



# Corridor Study Background

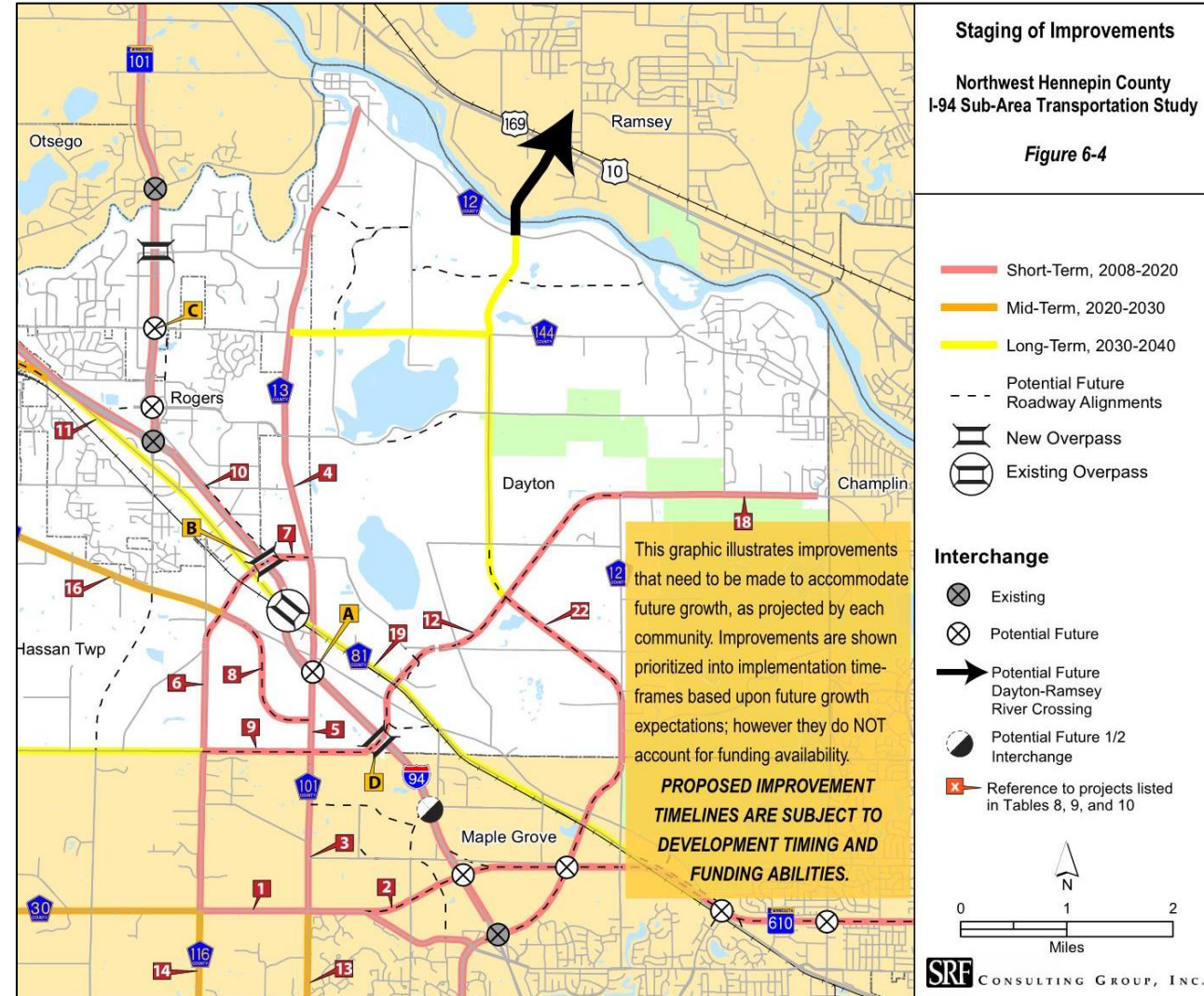
- Northwest Hennepin County I-94 Sub-Area Transportation Study (2006 to 2008)
- Identified a future system plan with the following prioritization goals:
  - Improve east-west and north-south flow
  - Address current capacity issues at major intersections/interchanges
  - Address I-94 access issues
  - Develop an implementation plan





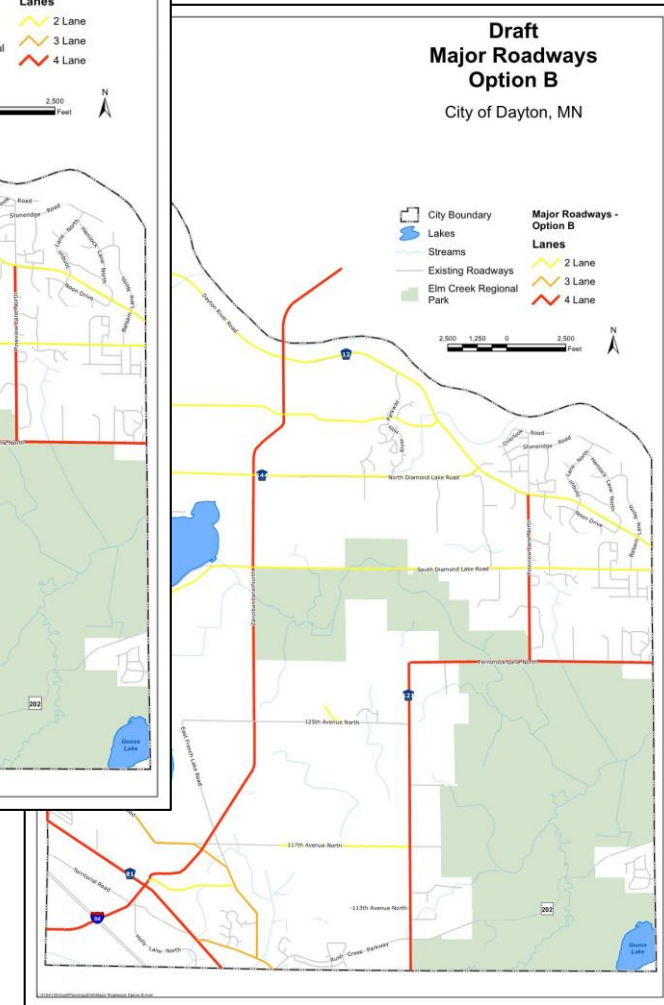
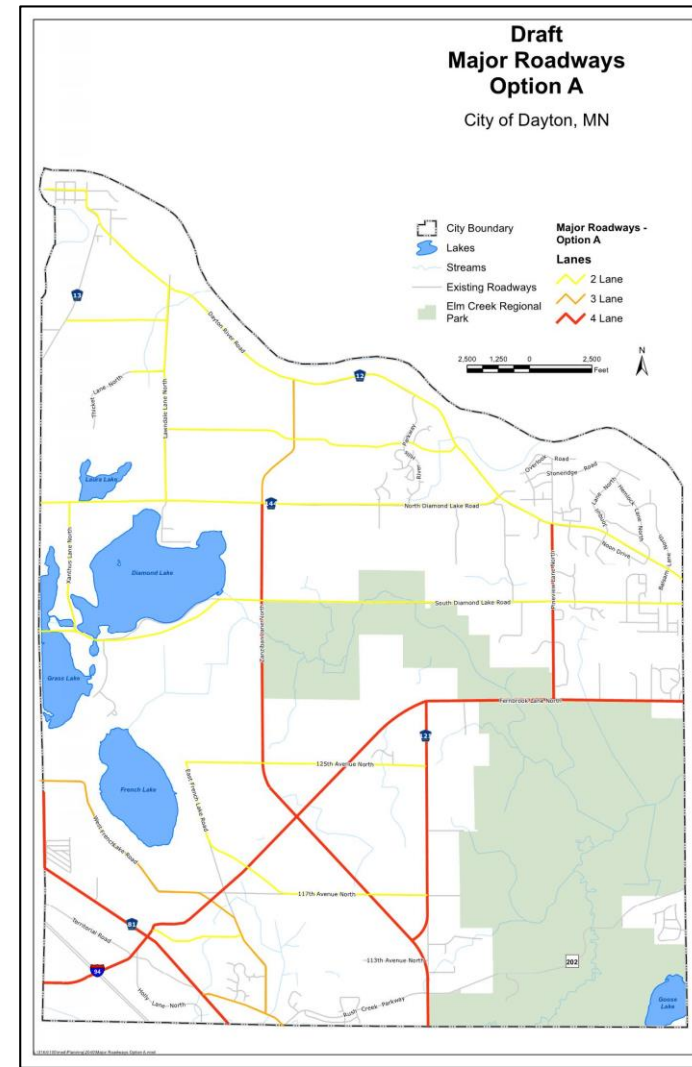
# Sub-Area Study Framework

- Planning document that identified improvements and staging
- Considered:
  - Functional Classification
  - Capacity
  - Access
  - Jurisdiction
  - Funding
- More detail needed, which leads to the current Corridor Study



# Corridor Study Area/Goals

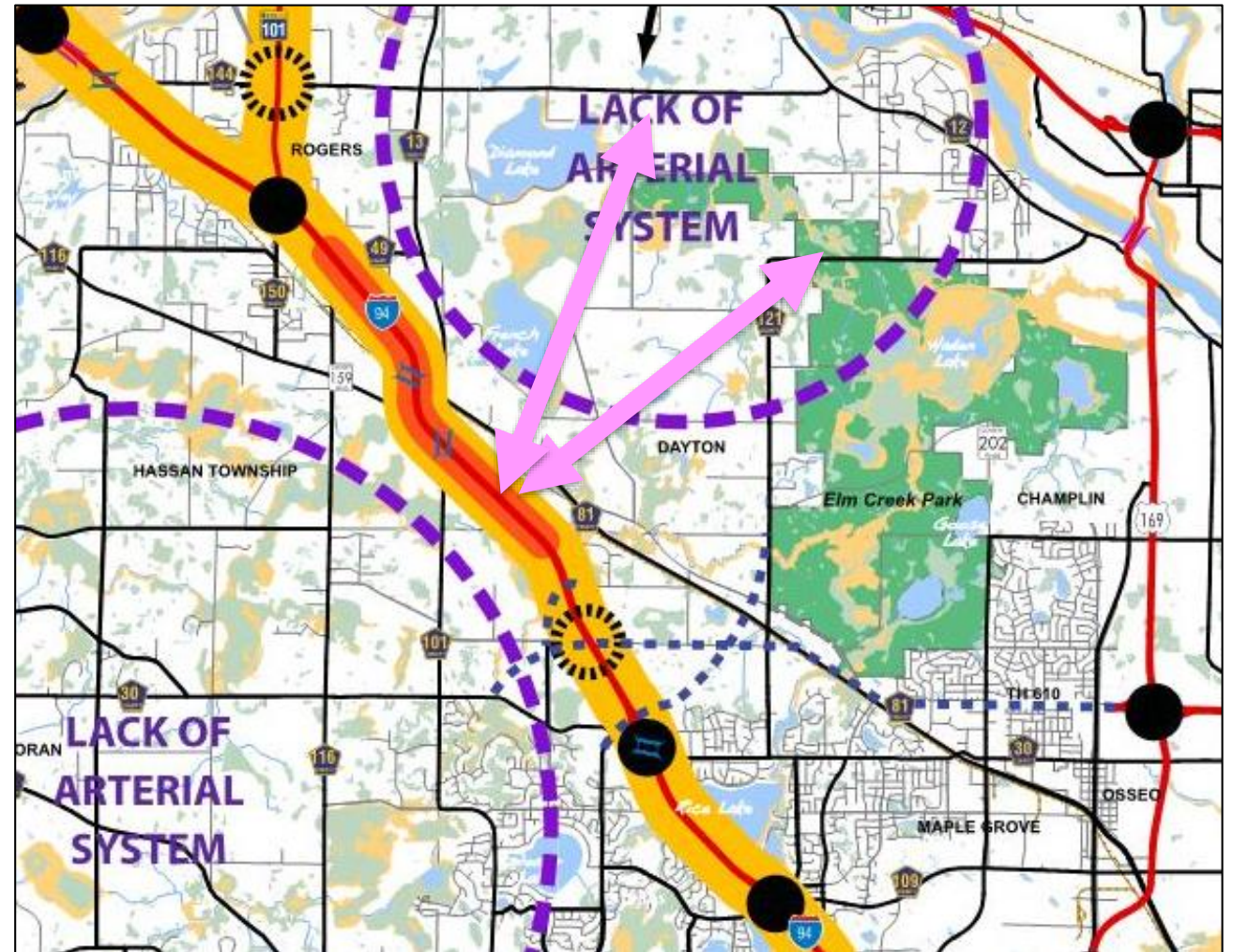
- Focus on Dayton Parkway and intersecting roadways
- Began: Fall 2018
- Expected Completion: May 2019
- Goals Include:
  - Better define alignment, capacity, access, and costs
  - Develop a City Center vision compatible with current land use guidance and the future transportation system





# General System Configuration

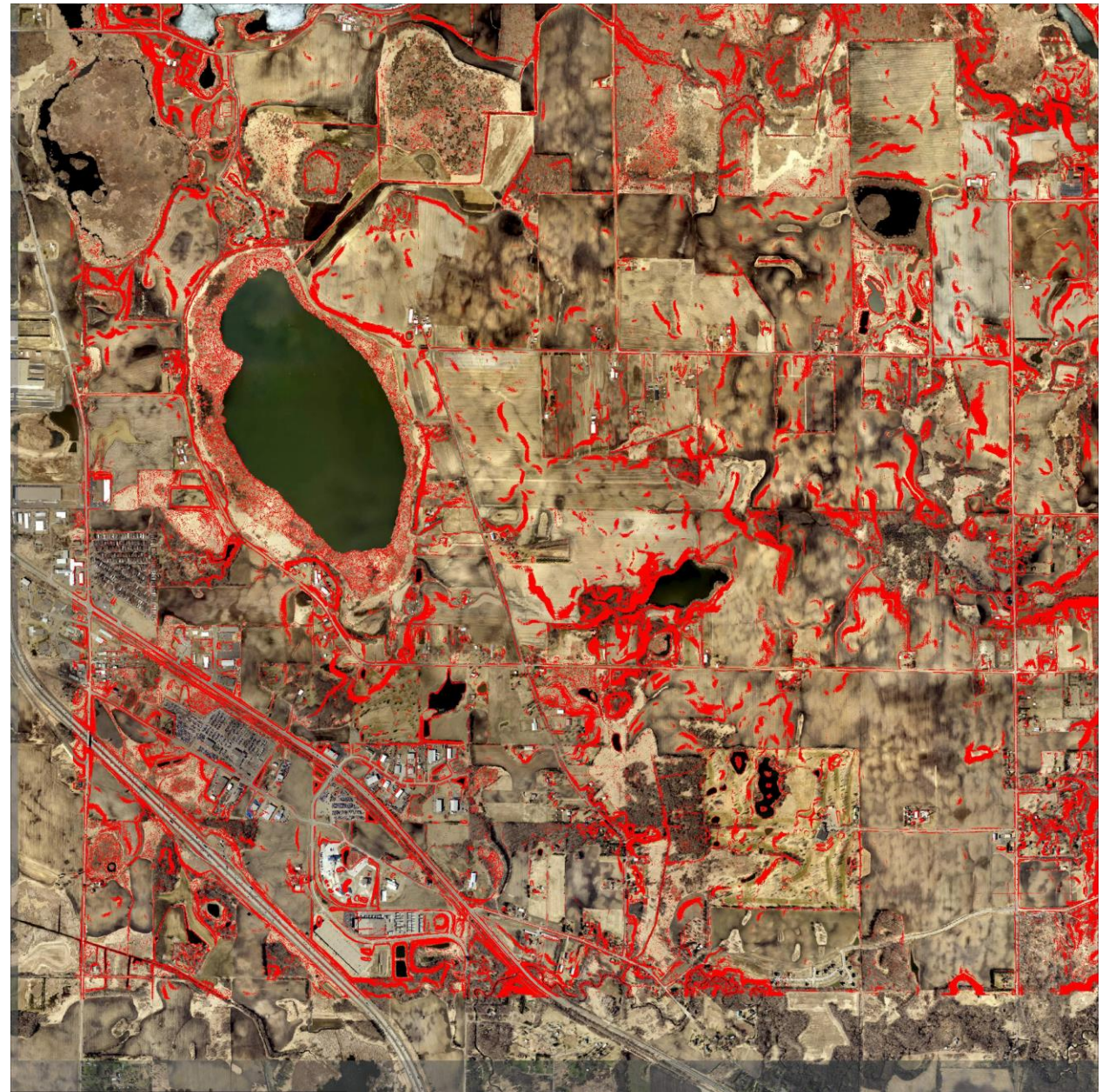
- Reviewed 2 primary Dayton Parkway configurations, plus 1 Hybrid
  - Option A: East - West Focus
  - Option B: North - South Focus
  - Option C: Hybrid
- There is not a clear option that make more sense from a transportation/capacity perspective (all can work)





# Corridor Refinements

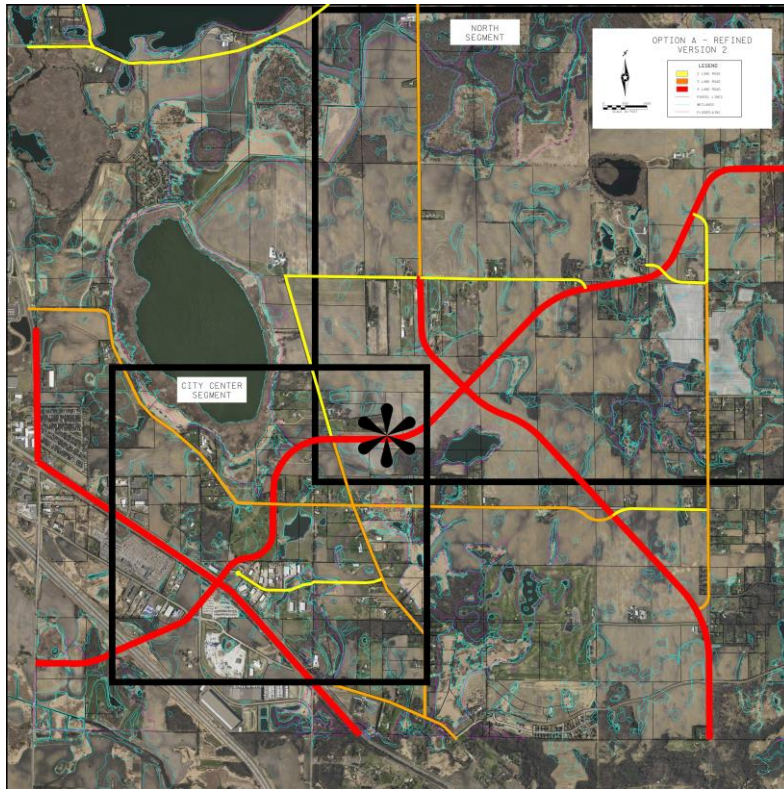
- Goal – Identify more specific alignments based on environmental factors
- Leveraged:
  - Topography
  - Wetlands
  - Floodplains
  - Parcels



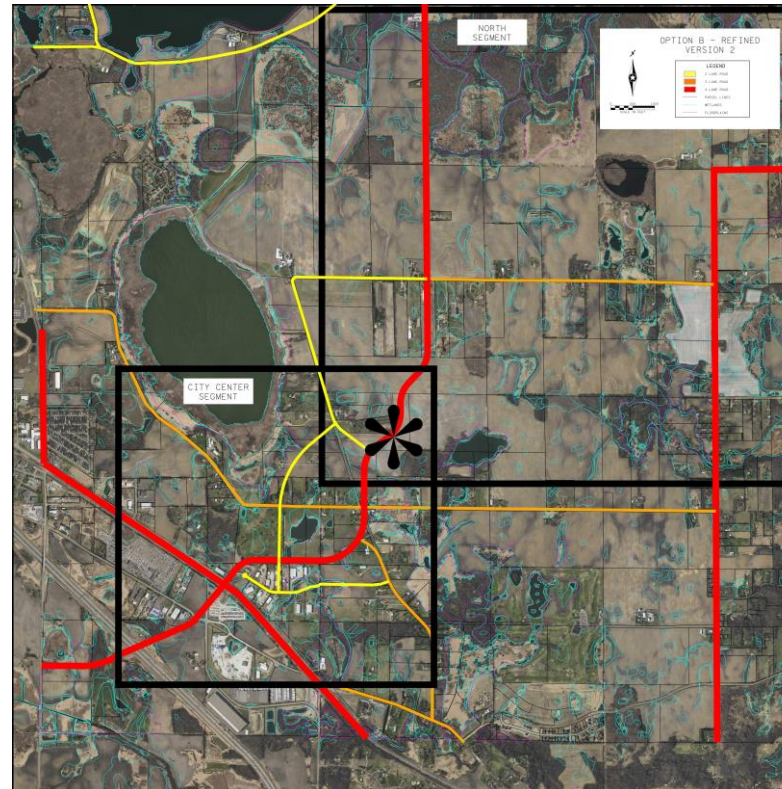


# Preliminary Options

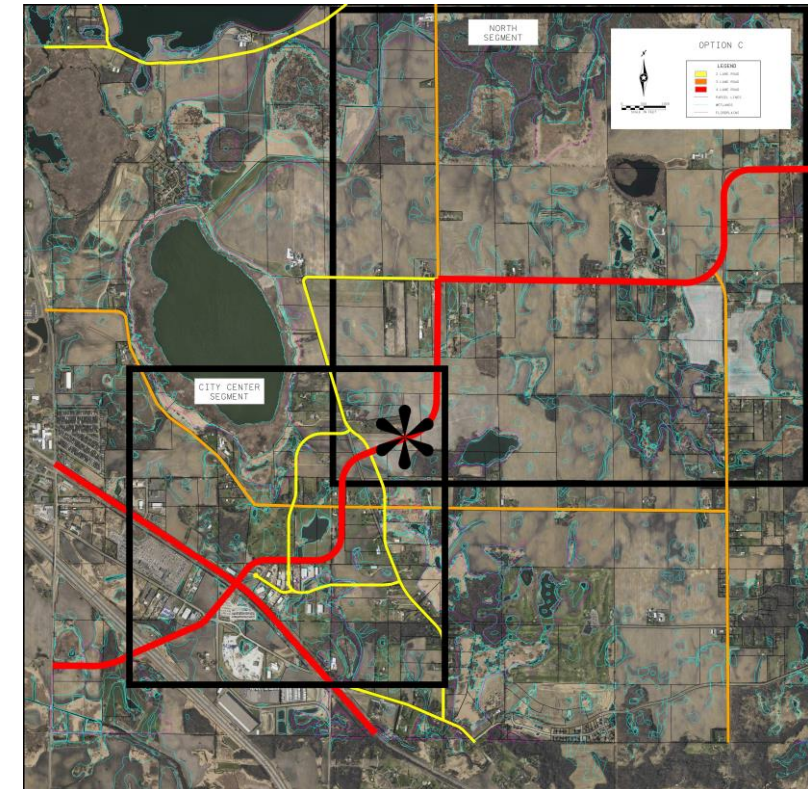
Option A (East-West)



Option B (North-South)



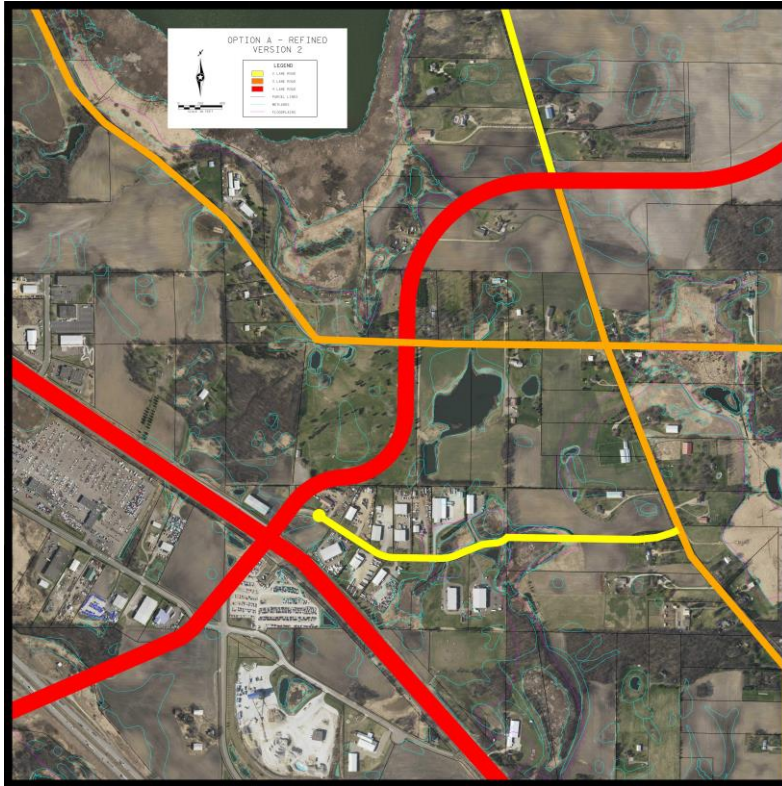
Option C (Hybrid)



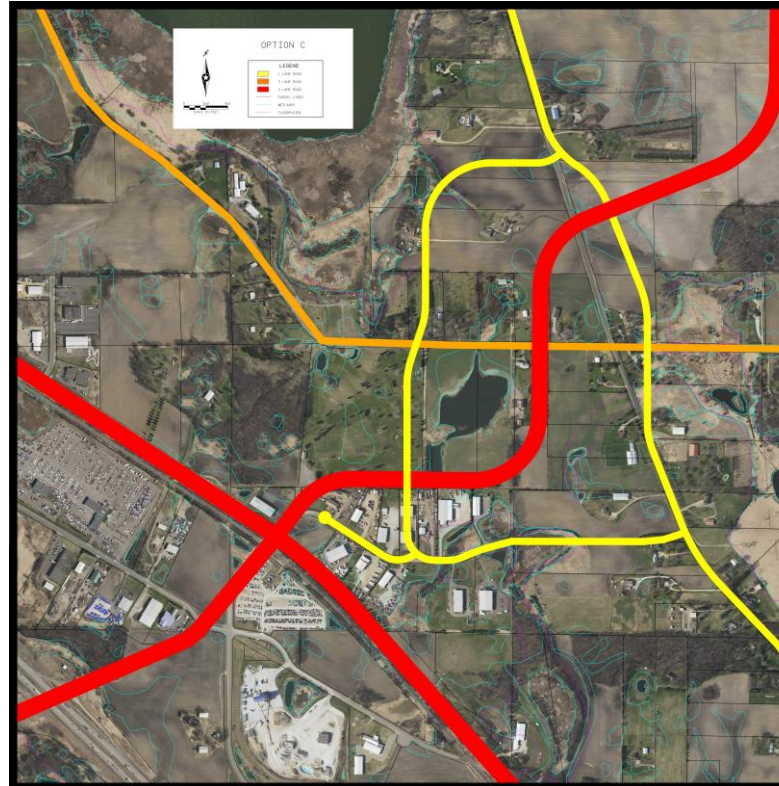


# City Center Segment

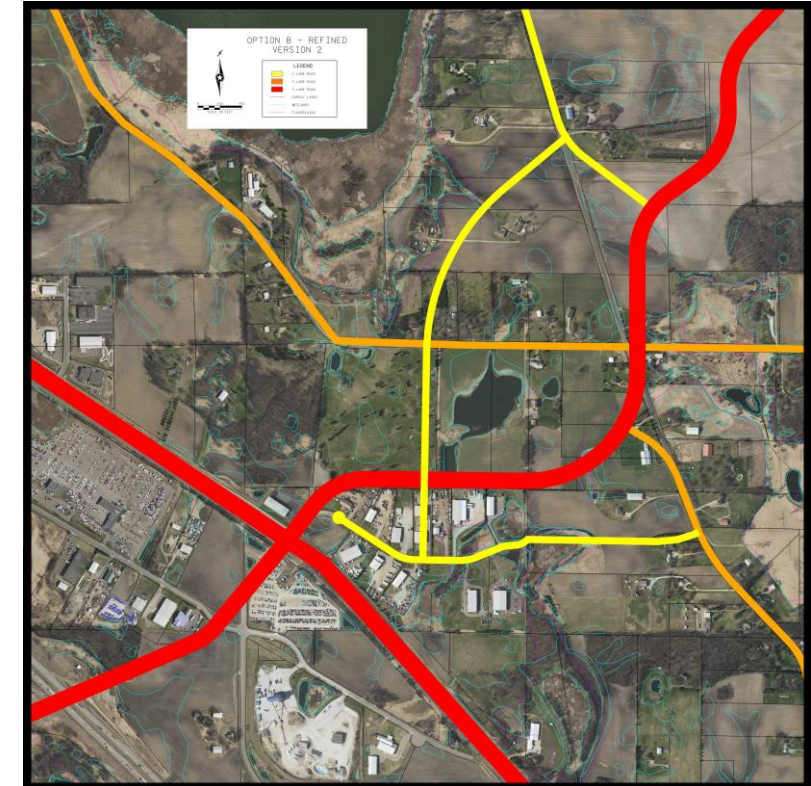
Option CC-A (West)



Option CC-B (Center)



Option CC-C (East)





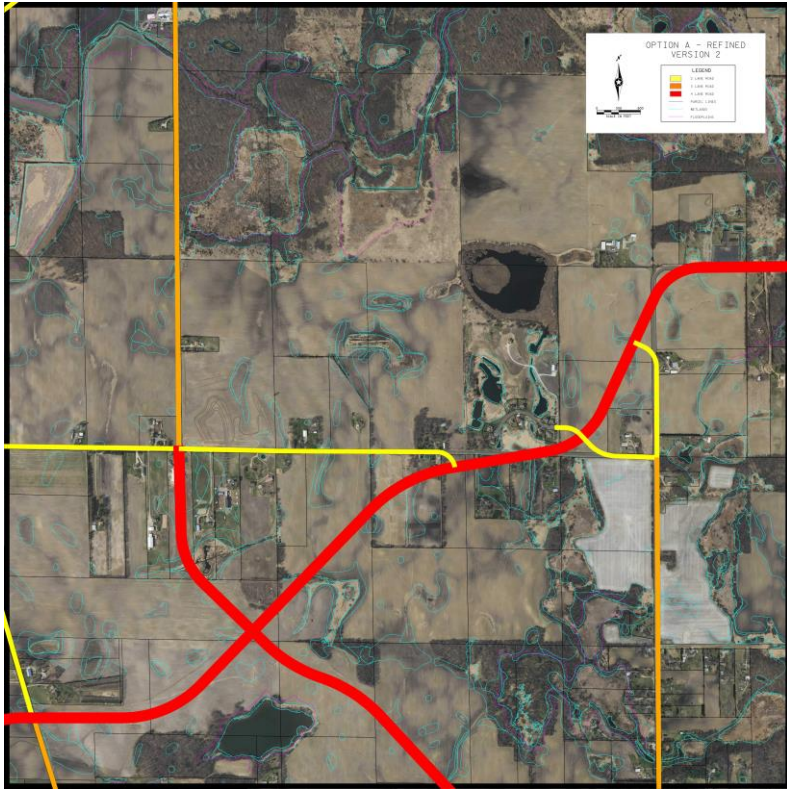
# City Center Segment - Evaluation

Evaluation Criteria	City Center Segment (Southwest Area)		
	Alternative		
	West Alignment	Center Alignment	East Alignment
Land Use Compatibility	Green	Red	Yellow
Local Access	Yellow	Yellow	Yellow
Existing Street Use	Green	Yellow	Green
Major/Access Spacing	Green	Yellow	Green
Constructibility (Phasable)	Green	Green	Yellow

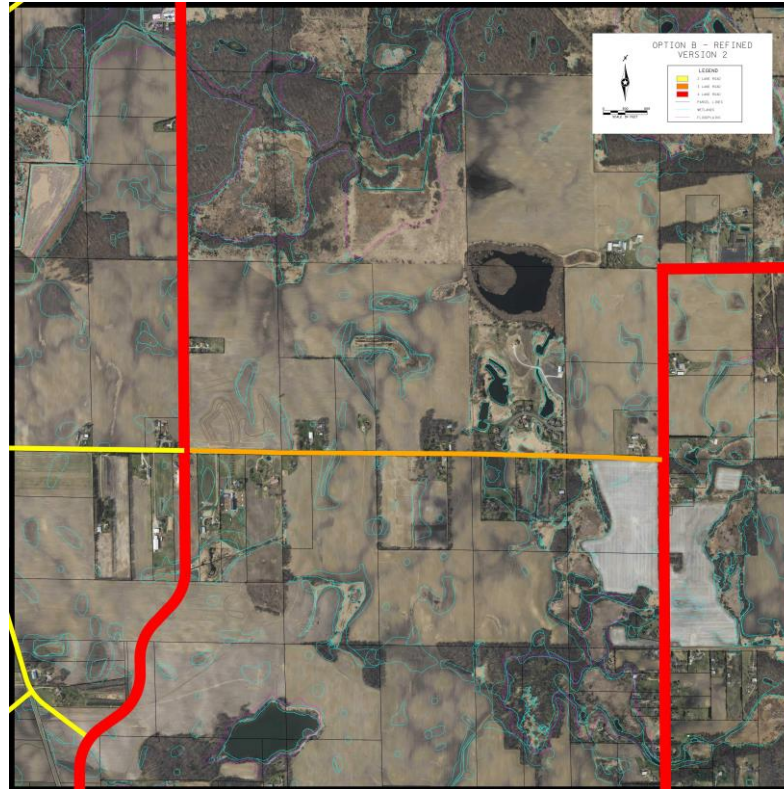
- The west alignment best met most of the evaluation criteria and would provide a buffer between the industrial area and a future City Center
- The center alignment would bisect a future City Center and was not supported by Hennepin County staff
- The east alignment does not provide the buffer between the industrial area and a future City Center

# North Segment

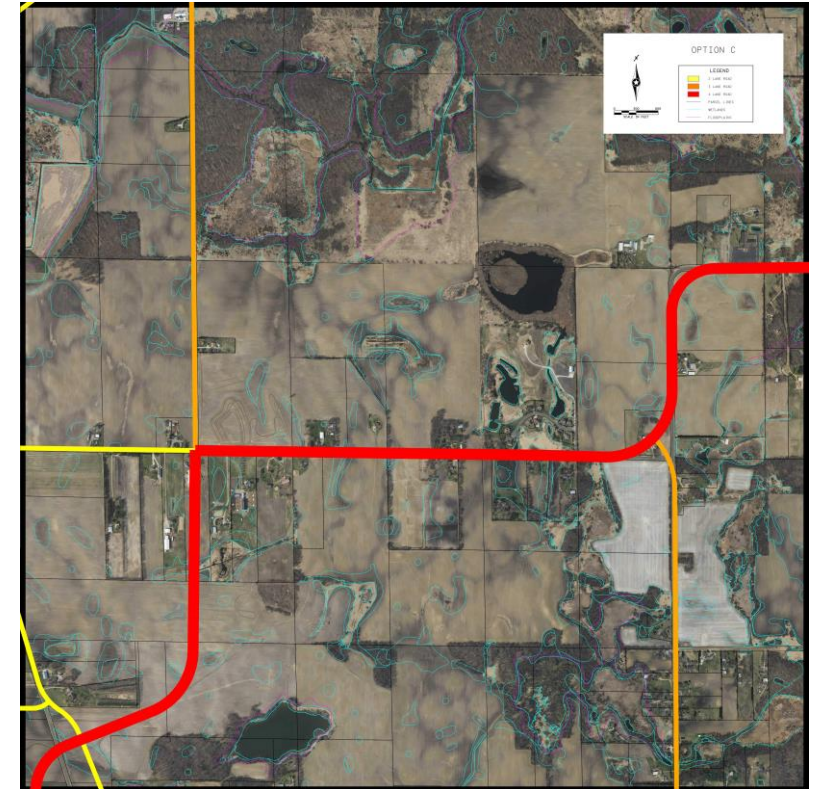
## Option N-A (East-West)



## Option N-B (North-South)



## Option N-C (Hybrid)





# North Segment - Evaluation

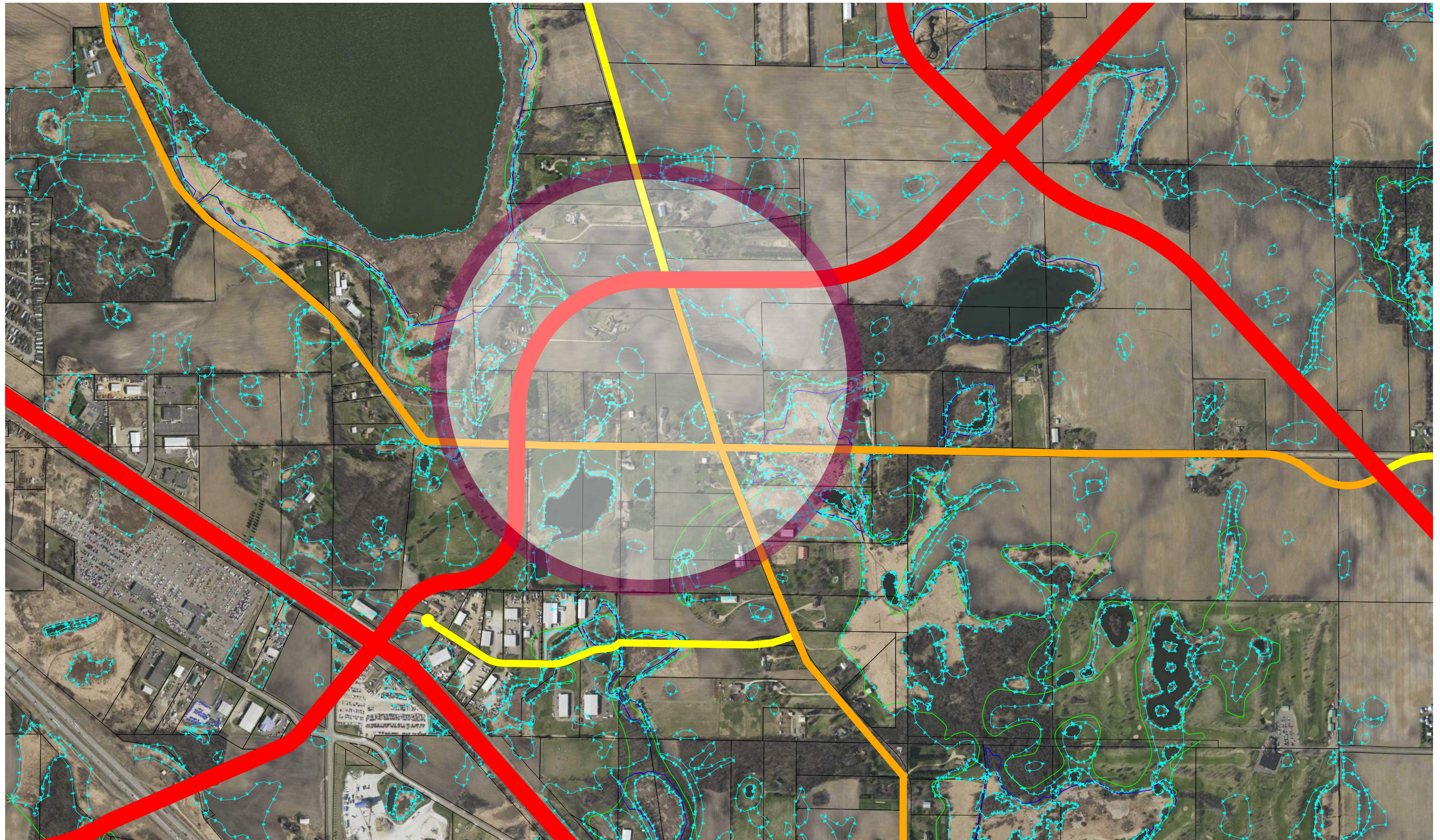
Evaluation Criteria	Northern Segment (Northeast Area)		
	Alternative		
	Option A East-West	Option B North-South	Option C Hybrid
Mobility			
Safety			
Access			
Connectivity (to City Centers)			
Constructibility (Phasable)			
River Crossing Compatibility			
Environmental			
Long-Term Maintenance (System miles)			
Parcel Impacts (parcels)			
Capital Costs (new construction)			

- Option A provides more opportunity to control access and reduce impacts to existing access
- Option B and C are relatively similar; they mostly leverage the existing system, but have more access conflicts



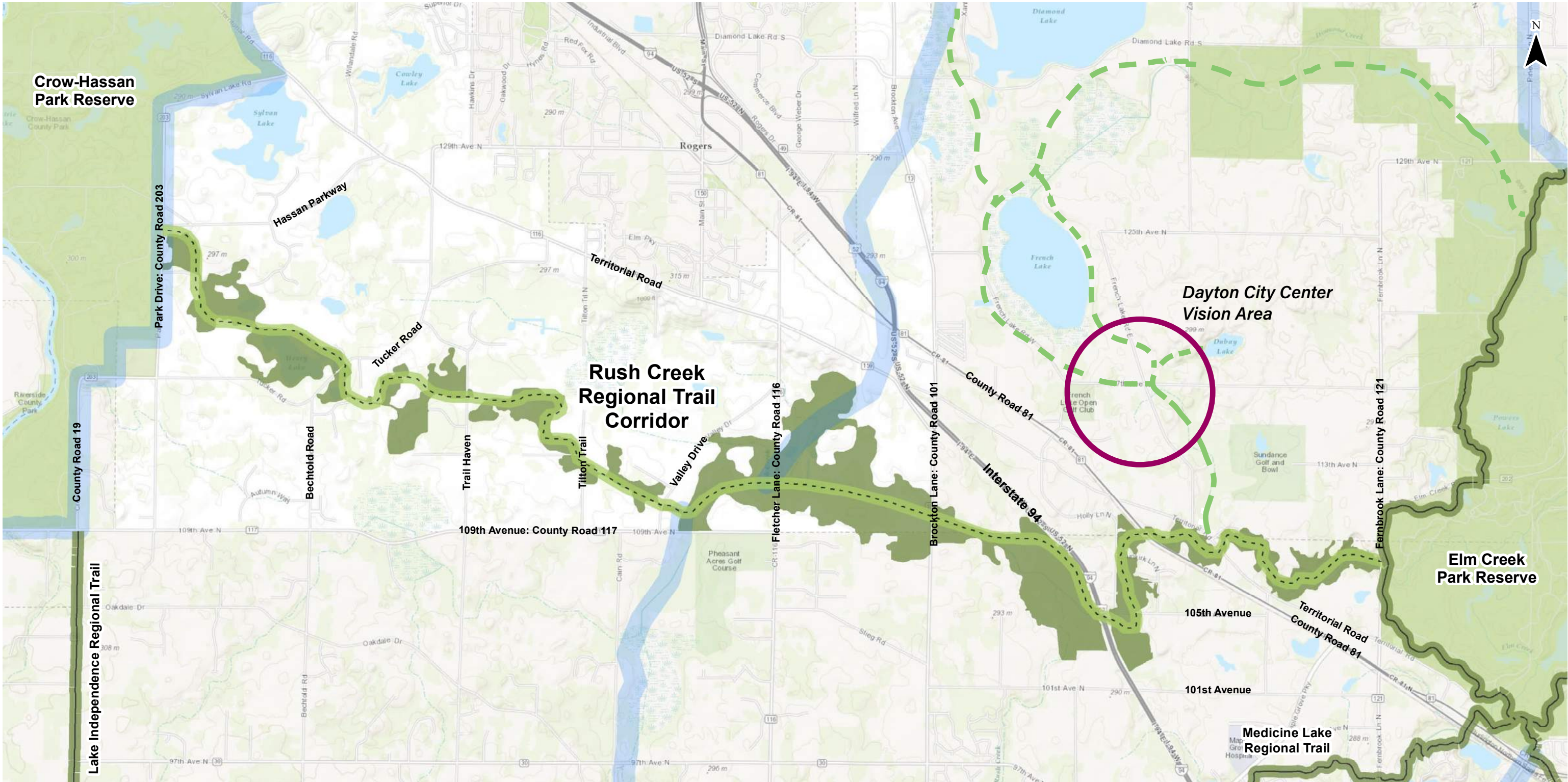
# City Center Vision





City Center Vision Area Context- Parcels, Wetlands, Potential Future Road Network





# Rush Creek Regional Trail Corridor

- Existing: Open to the Public
- Approved Route: No Construction Funding in Place
- Regional Trail Search Corridor
- Areas with Natural Resource Value Along Rush Creek Regional Trail Corridor



This map is a compilation of data from various sources and is provided "as is" without warranty of any representation of accuracy, timeliness, or completeness. The user acknowledges and accepts the limitations of the Data, including the fact that the Data is dynamic and in a constant state of maintenance, correction, and update.

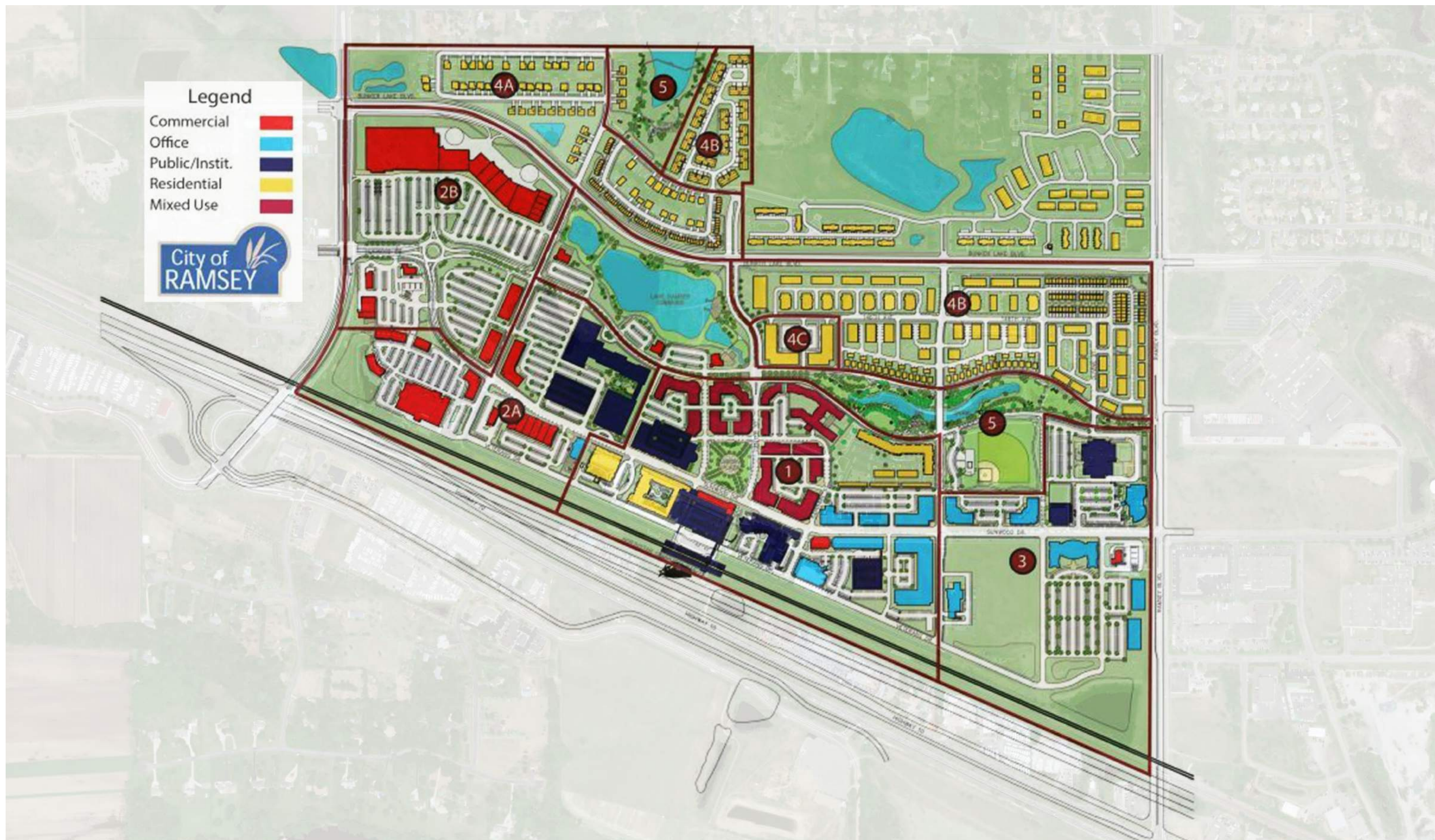
## Potential Green Connections

Dayton City Center Vision Preliminary Concepts  
Dayton, MN

March 28, 2019  
Project 11892





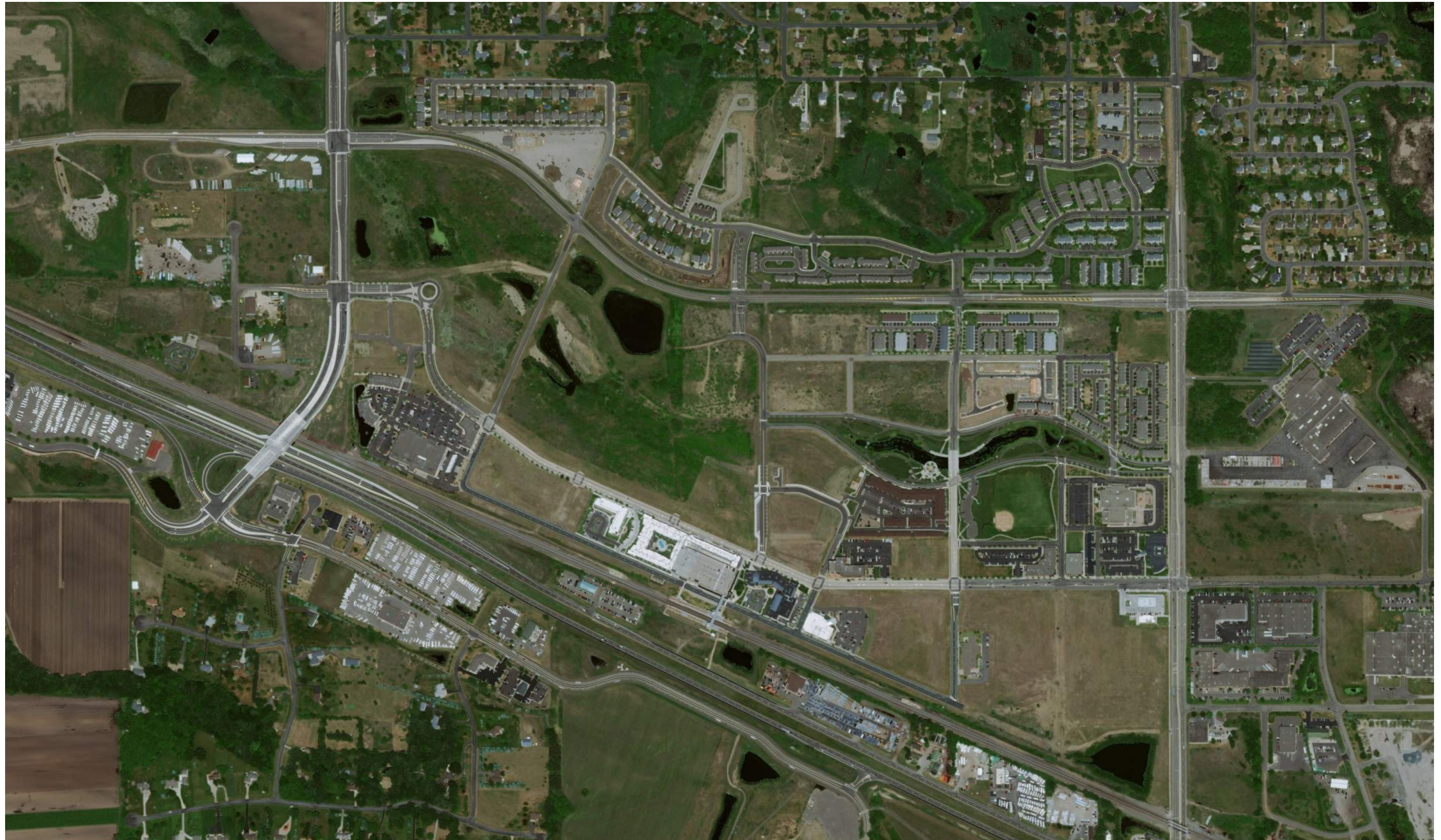


## Precedent Study: Ramsey COR

Dayton City Center Vision Preliminary Concepts  
Dayton, MN

March 28, 2019  
Project 11892





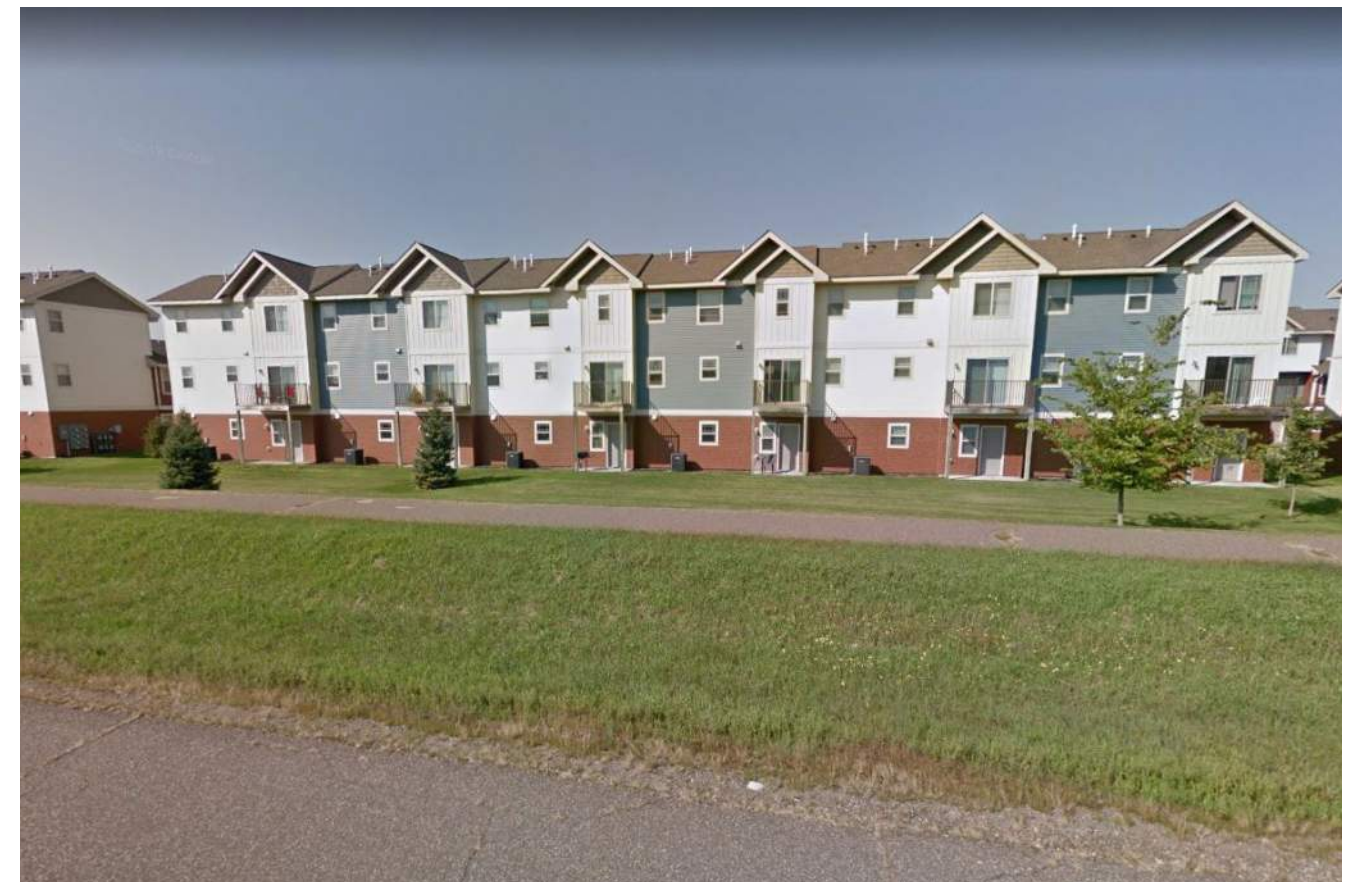
**Precedent Study: Ramsey COR**

Dayton City Center Vision Preliminary Concepts  
Dayton, MN

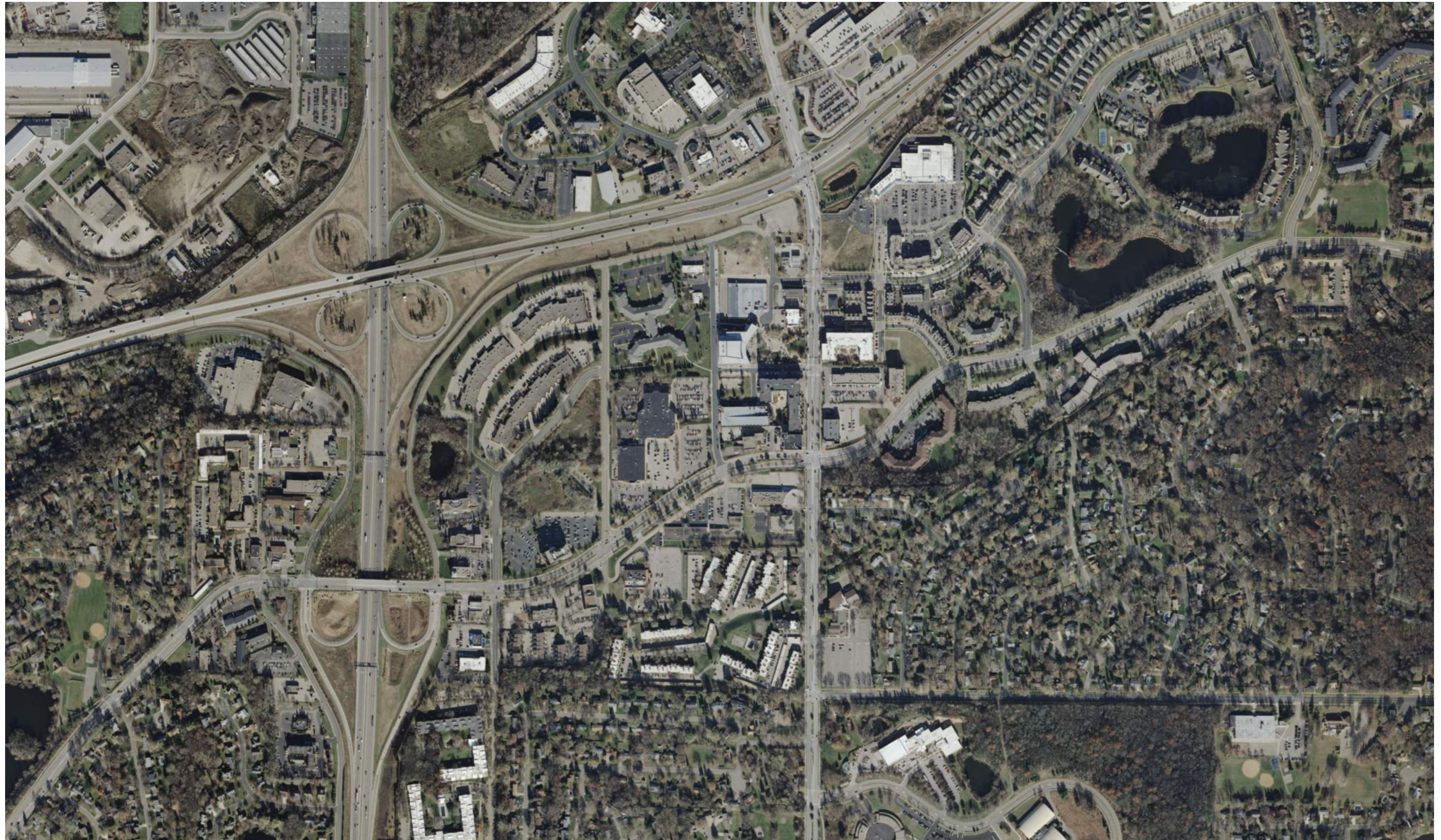
March 28, 2019  
Project 11892











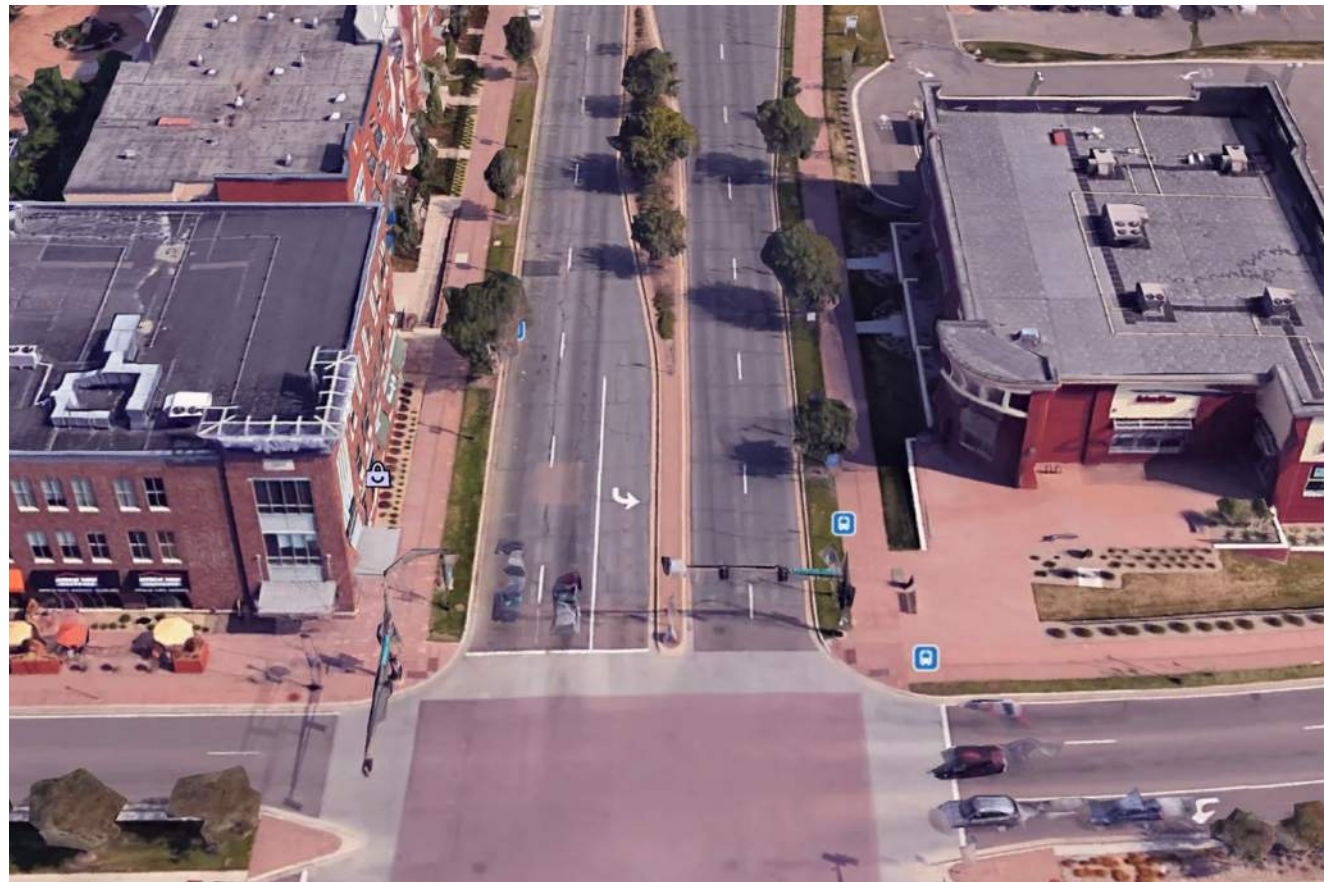
**Precedent Study: Burnsville Heart of the City**

Dayton City Center Vision Preliminary Concepts  
Dayton, MN

March 28, 2019  
Project 11892







## Precedent Study: Burnsville Heart of the City

Dayton City Center Vision Preliminary Concepts  
Dayton, MN

March 28, 2019  
Project 11892





**Precedent Study: Arbor Lakes**

Dayton City Center Vision Preliminary Concepts  
Dayton, MN

March 28, 2019  
Project 11892





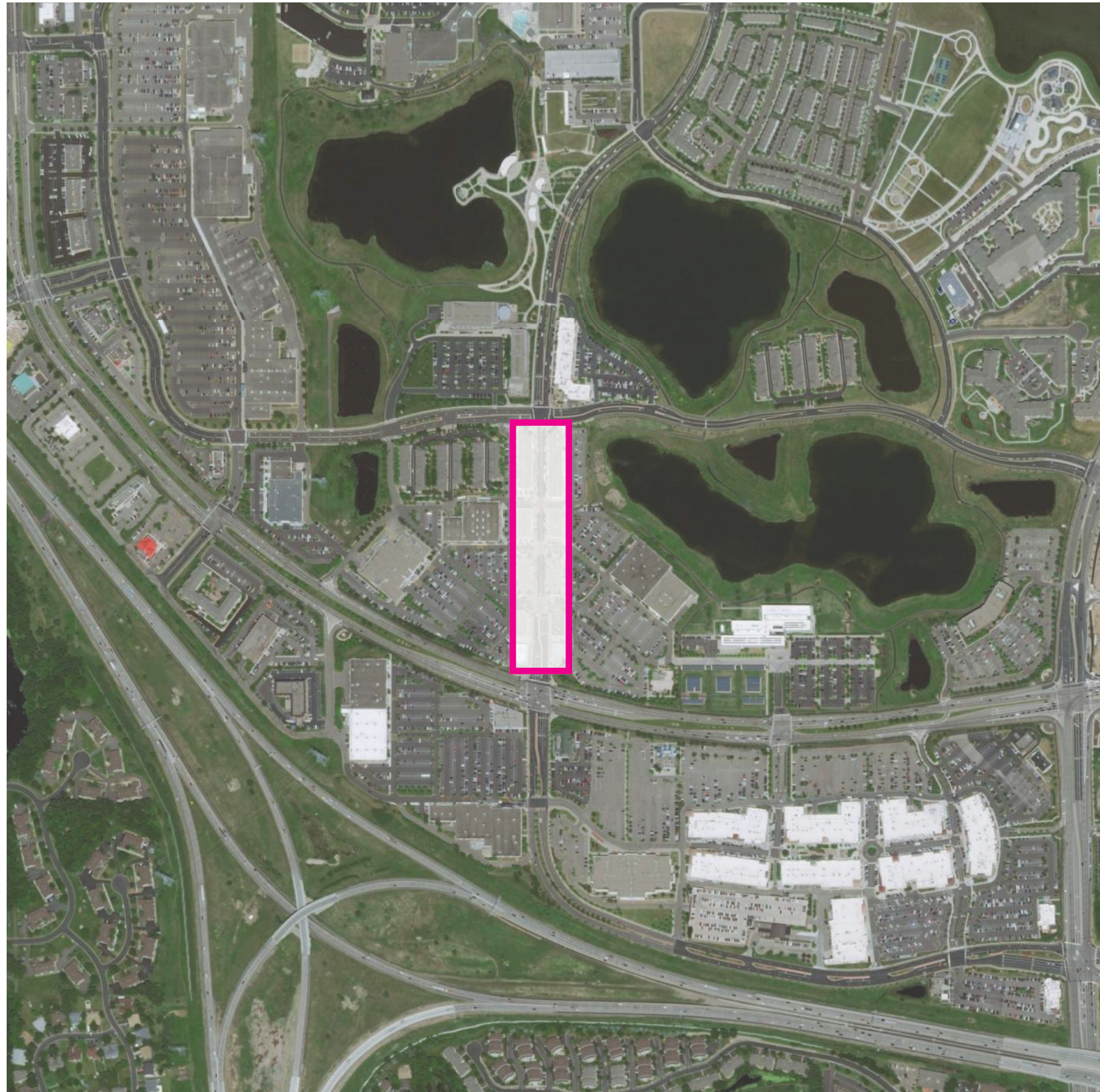


## Precedent Study: Arbor Lakes

Dayton City Center Vision Preliminary Concepts  
Dayton, MN

March 28, 2019  
Project 11892





## Precedent Study: Arbor Lakes - Mixed Use "Main Street"

Dayton City Center Vision Preliminary Concepts  
Dayton, MN

March 28, 2019  
Project 11892





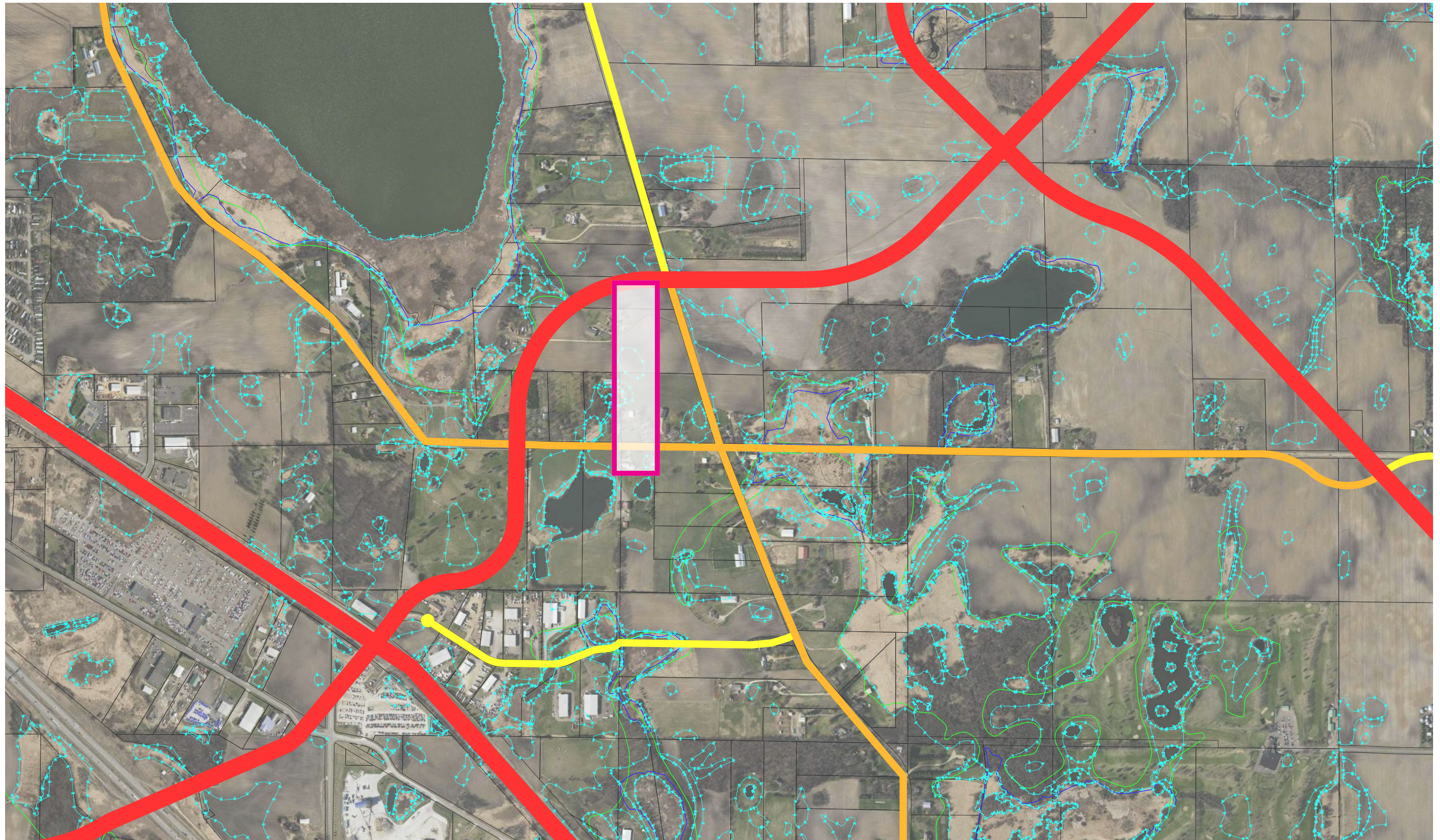
## Precedent Study: Arbor Lakes - High Density Residential Area

Dayton City Center Vision Preliminary Concepts  
Dayton, MN

March 28, 2019  
Project 11892







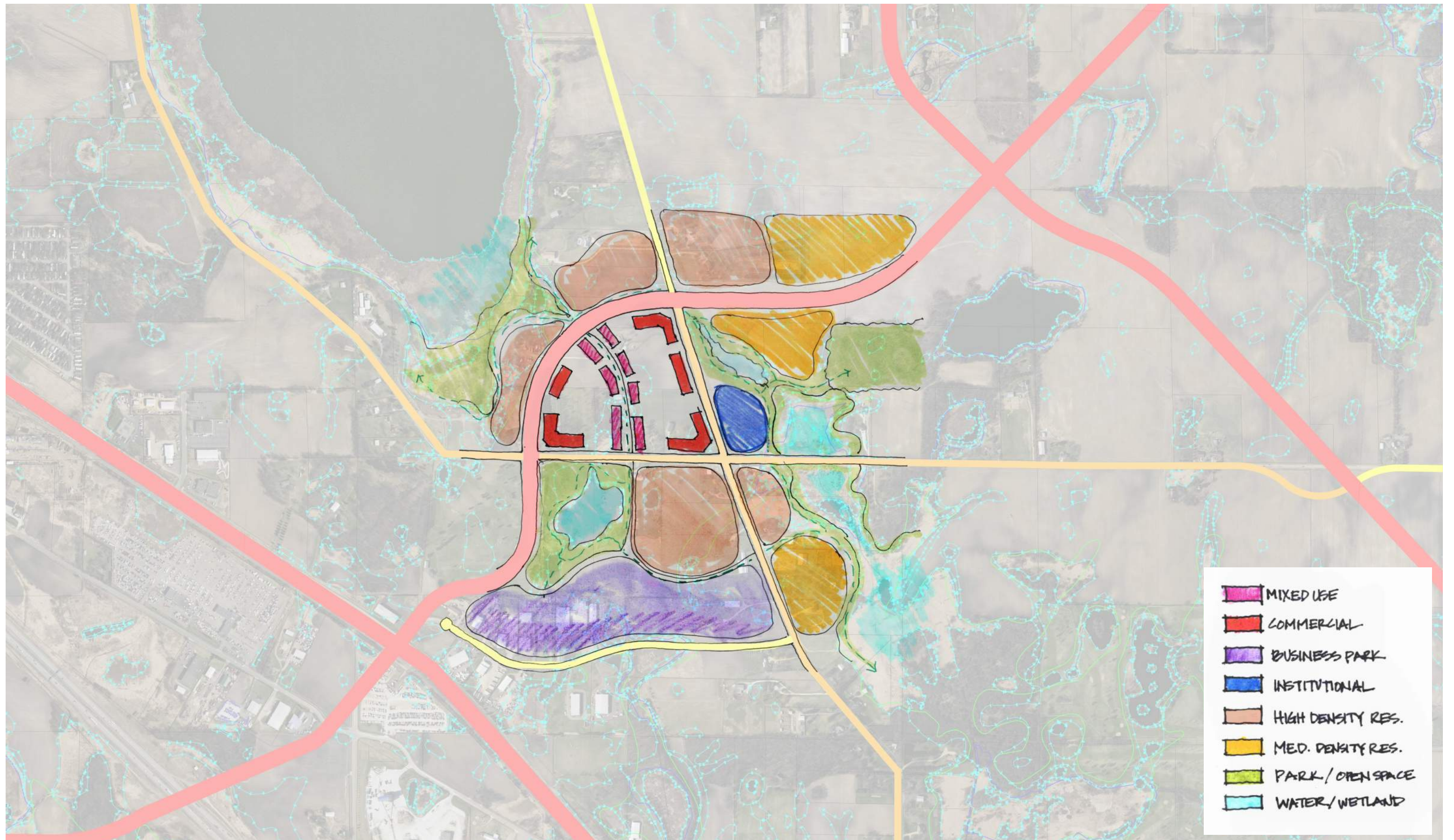
**Arbor Lakes Mixed Use “Main Street” Size Comparison**

Dayton City Center Vision Preliminary Concepts  
Dayton, MN

March 28, 2019  
Project 11892





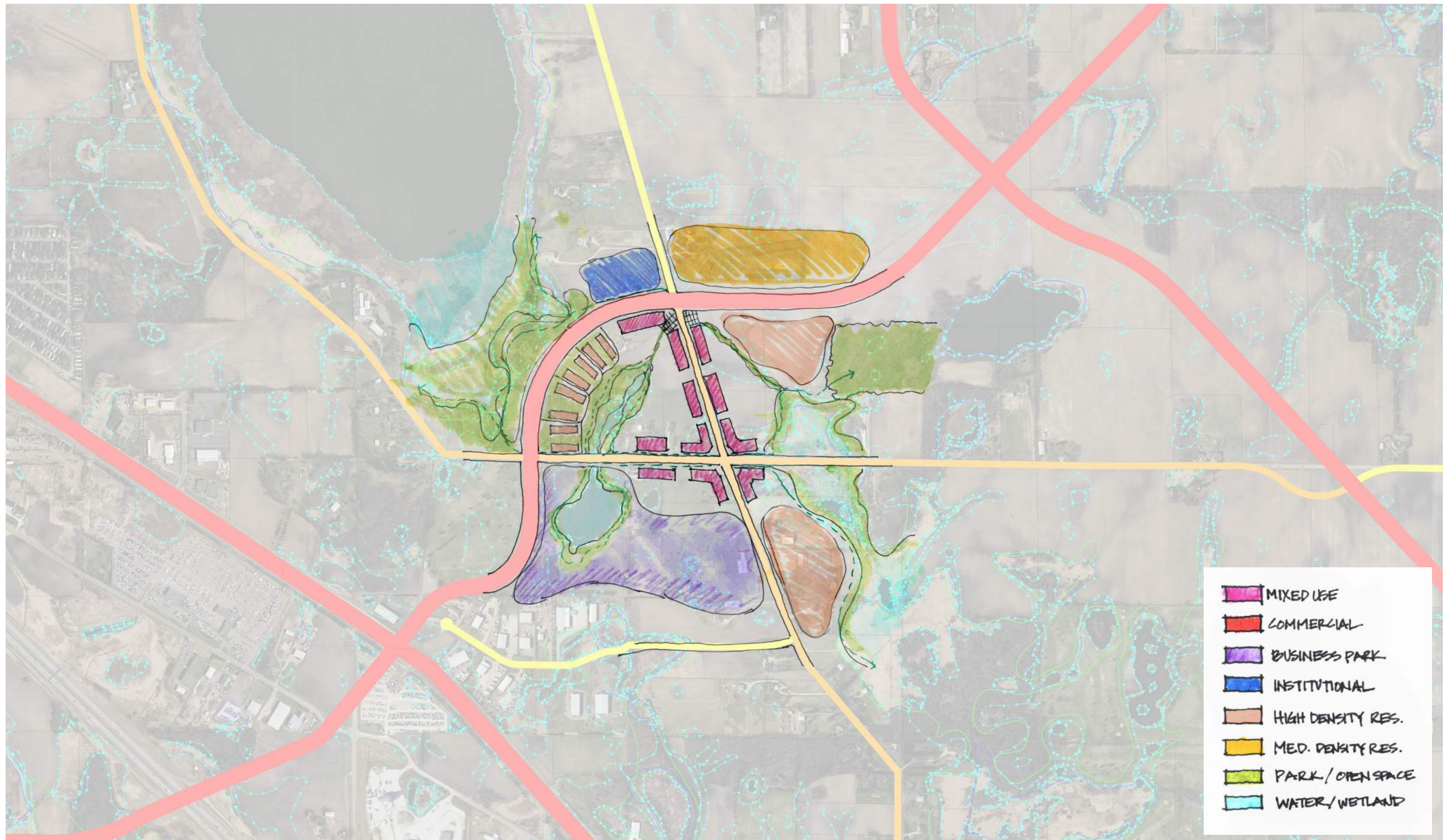


## Dayton City Center Concept - 1

Dayton City Center Vision Preliminary Concepts  
Dayton, MN

April 03, 2019  
Project 11892



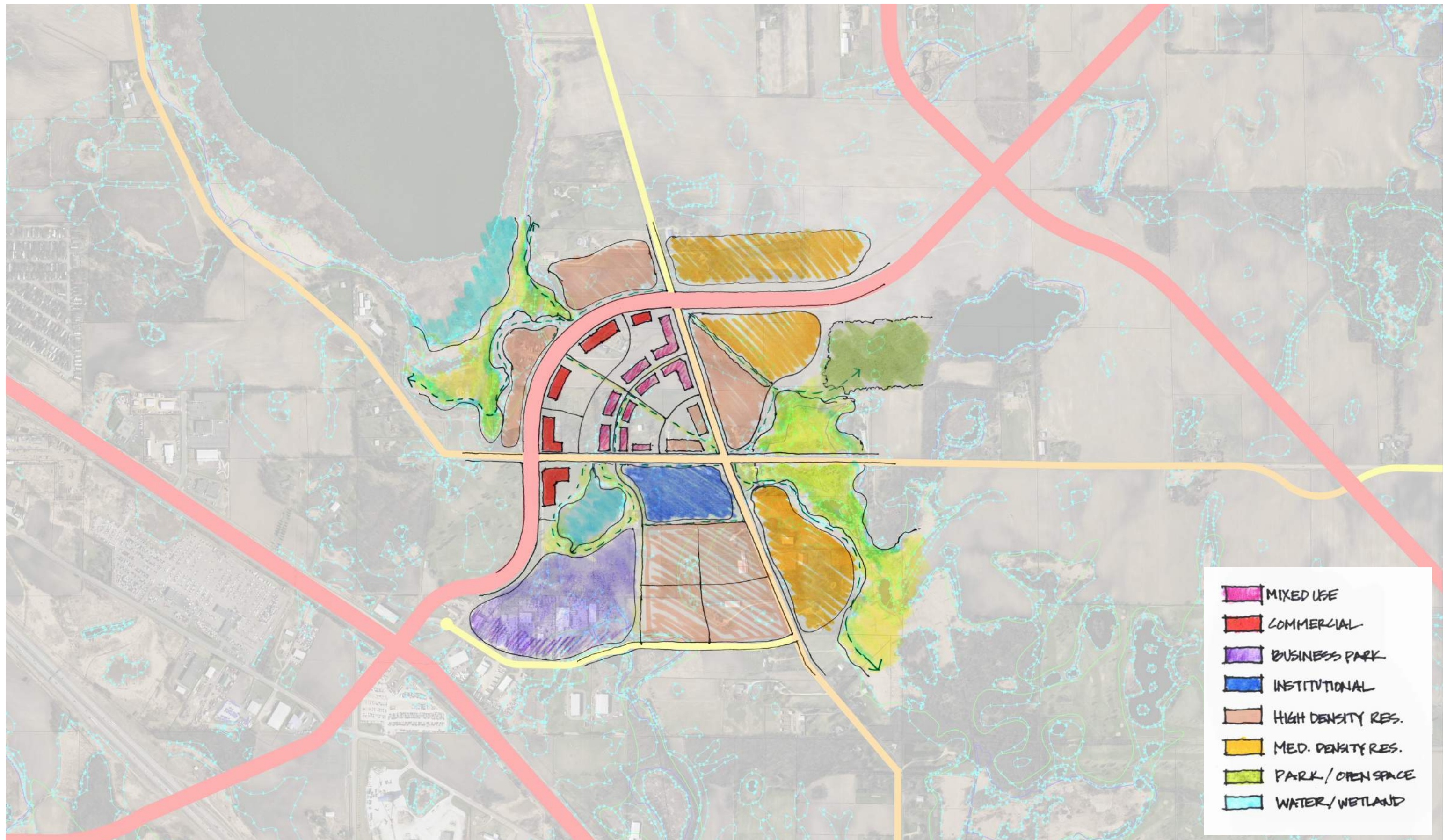


## Dayton City Center Concept - 2

Dayton City Center Vision Preliminary Concepts  
Dayton, MN

April 03, 2019  
Project 11892



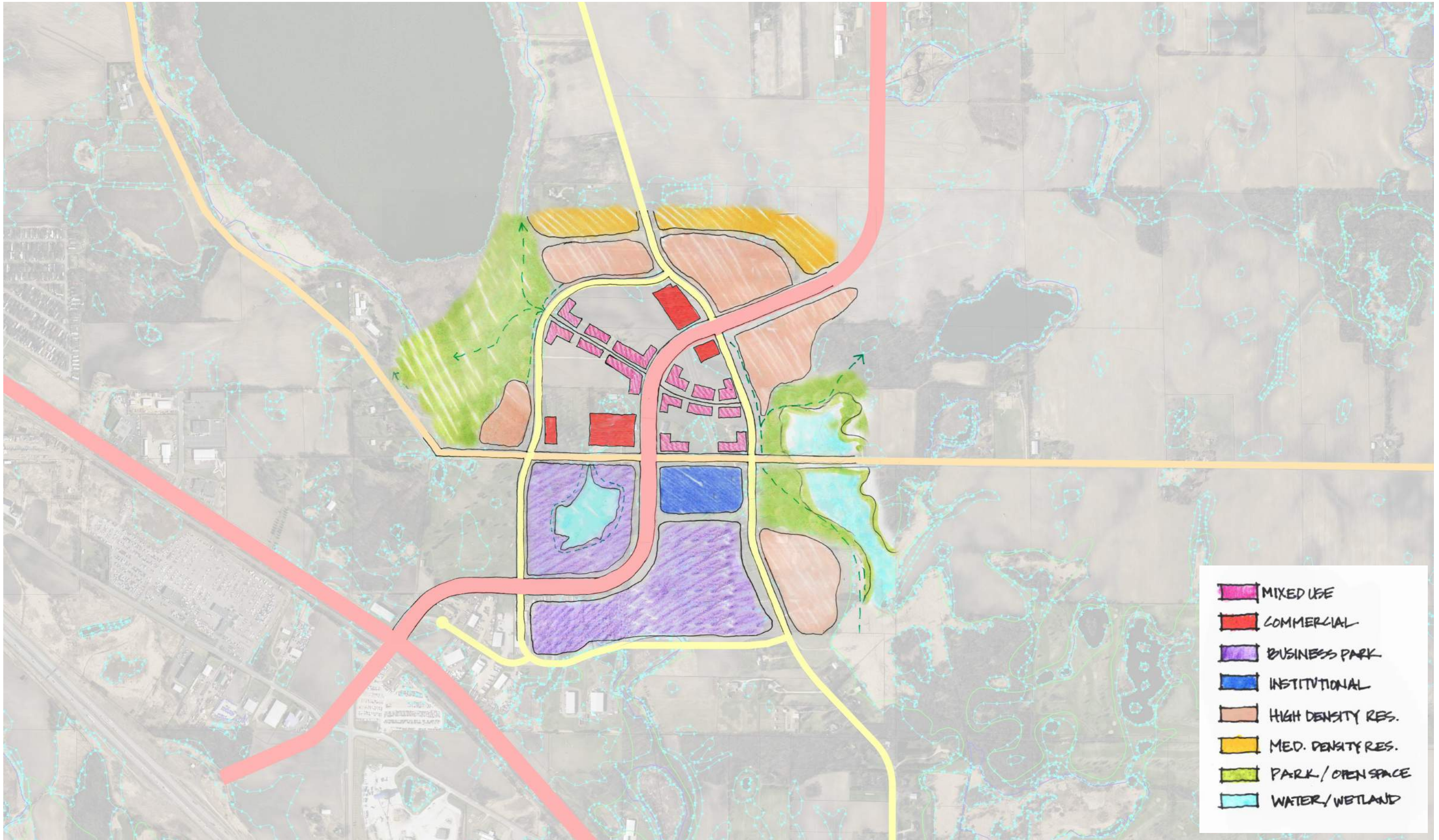


### Dayton City Center Concept - 3

Dayton City Center Vision Preliminary Concepts  
Dayton, MN

April 03, 2019  
Project 11892





- MIXED USE
- COMMERCIAL
- BUSINESS PARK
- INSTITUTIONAL
- HIGH DENSITY RES.
- MED. DENSITY RES.
- PARK / OPEN SPACE
- WATER / WETLAND



# Corridor Study Next Steps

- Refine Options (if needed)
- Complete Preliminary Cost Estimates
- Develop Study Documentation
  - Options
  - Evaluations
  - Findings
  - Recommendations/Next Steps





# Questions

Matt Pacyna and Nichole Schlepp



## Potential Jurisdictional Changes

### Northwest Hennepin County I-94 Sub-Area Transportation Study

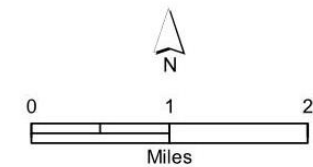
Figure 3-6

- Mn/DOT to County
- City to County
- County to City
- - - Mn/DOT New Route Extension
- - - County New Route Extension
- - - Local New Route Extension

#### Interchanges

- Existing
- Potential Future
- Potential Future 1/2 Interchange
- Existing Overpass
- Future Overpass

The jurisdictional ideas represented in this plan are presented for future consideration by the respective jurisdictions. The depiction of routes for jurisdictional change does not imply any acceptance or agreements for this change.



**SRF** CONSULTING GROUP, INC.



**Recommended Number  
of Lanes (2030)**

**Northwest Hennepin County  
I-94 Sub-Area Transportation Study**

**Figure 6-3**

