

Welcome

Dayton Parkway Interchange Open House



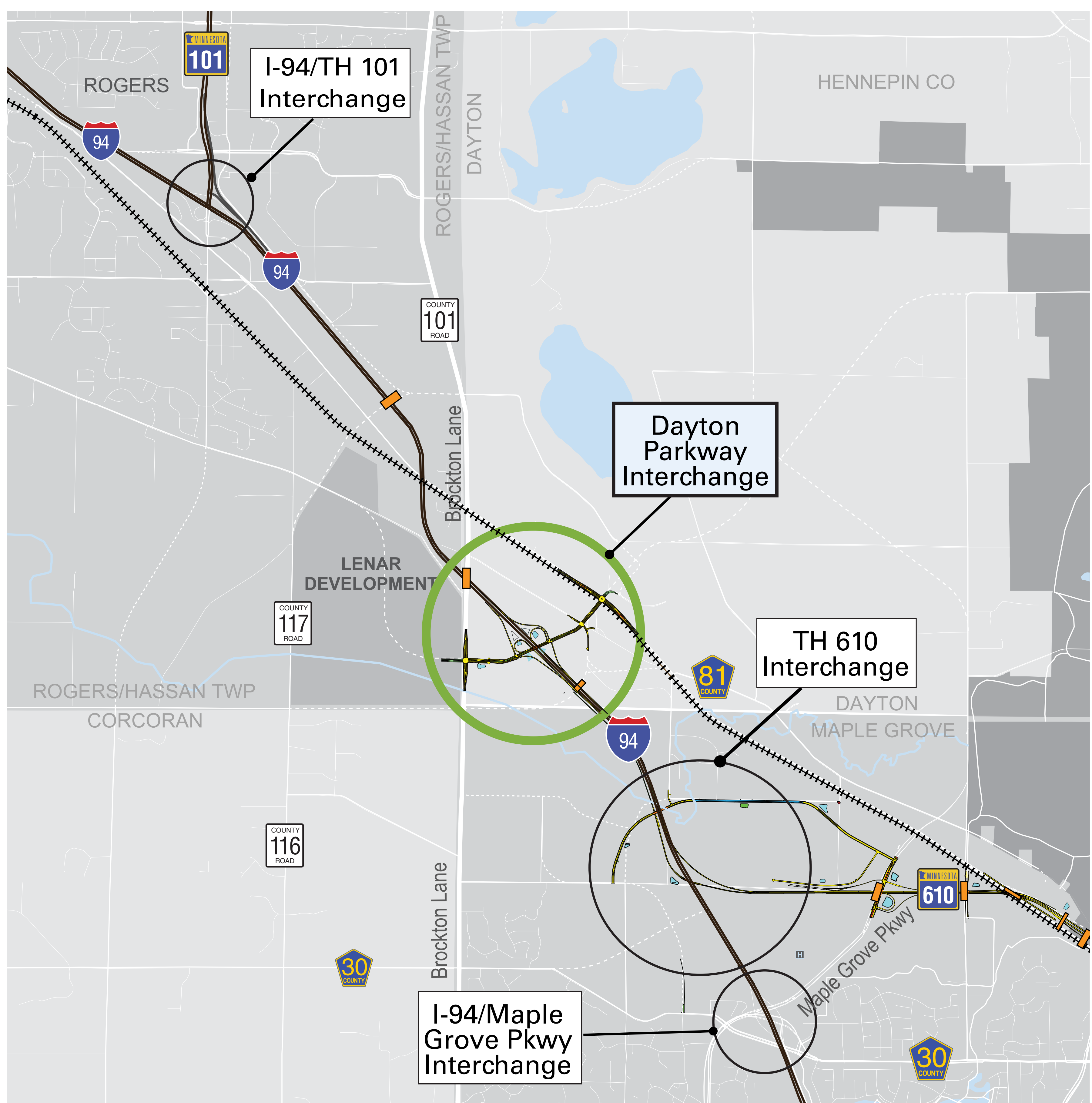
City of Corcoran



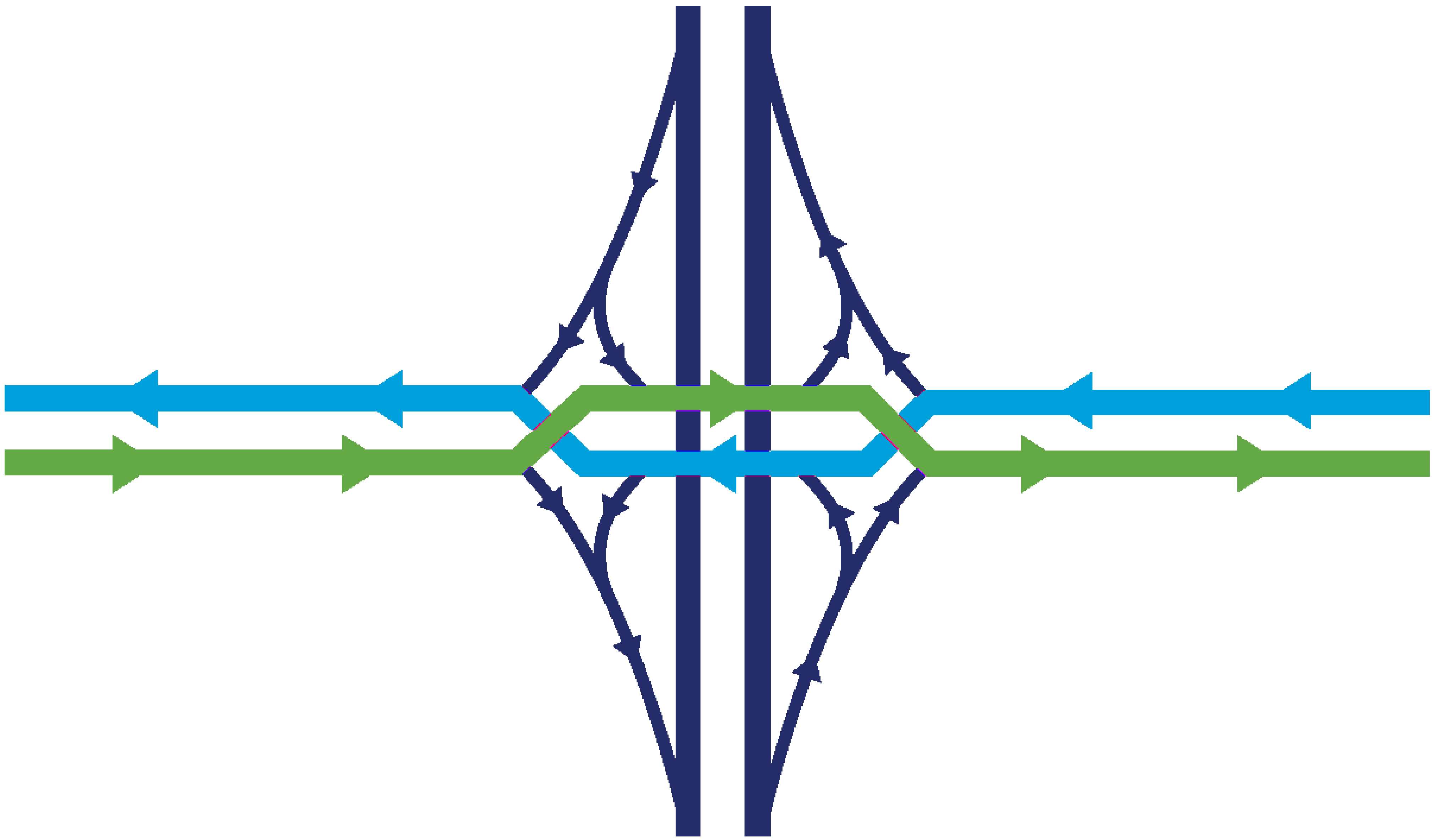
Why build the interchange?

Benefits of Dayton Parkway Interchange

- Support economic development
- Improved safety and emergency response
- Better distribution of traffic at I-94 Interchanges and local arterials
- Increase area property values
- Address planned growth in the area



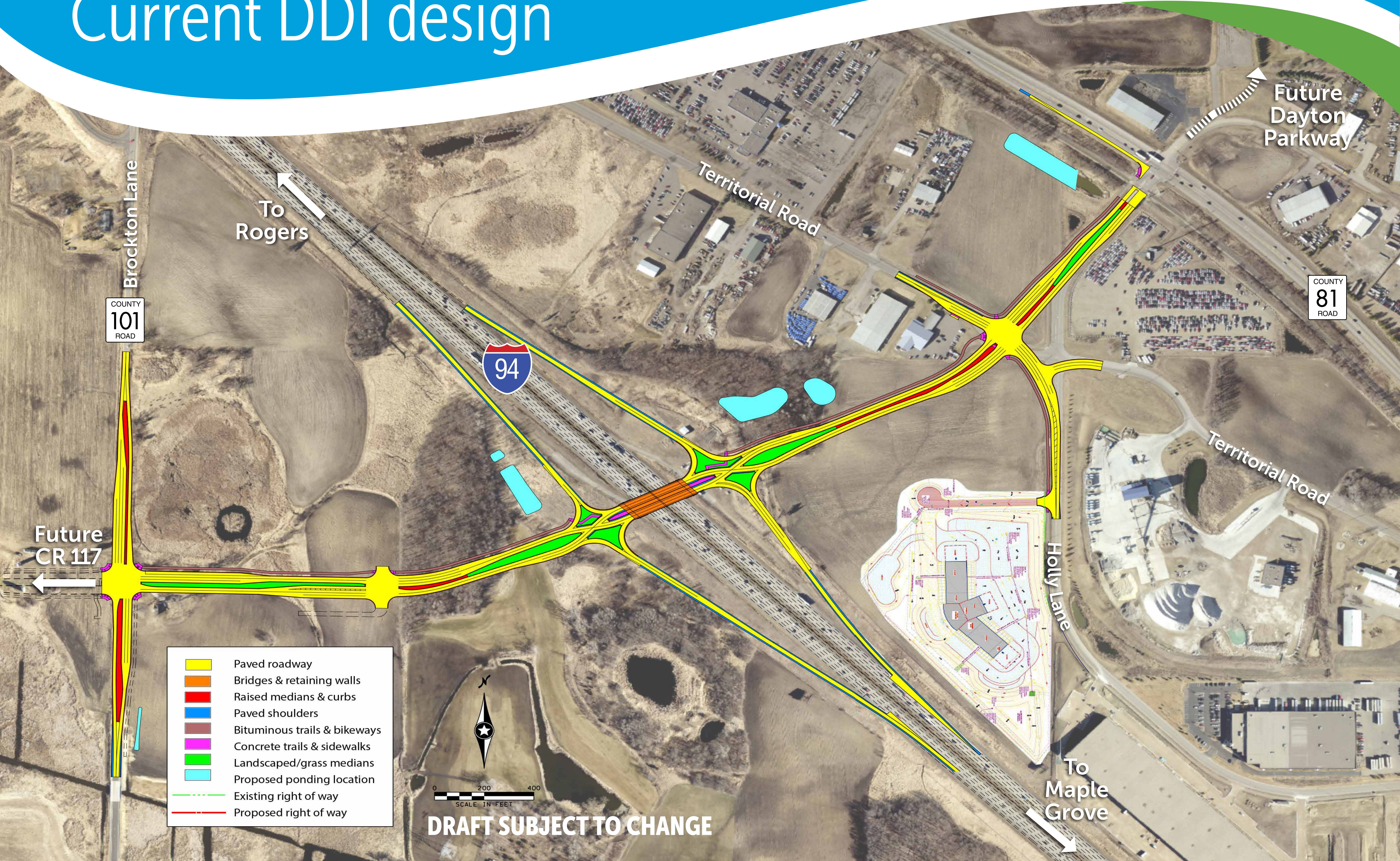
What is a Diverging Diamond (DDI) Interchange?



Key benefits of a DDI

- Safety - fewer conflicts than other interchange types
- High capacity - serves demand beyond year 2040
- Better operations - fewer stops, no loops
- Smaller footprint - less right of way

Current DDI design



How can I participate?

- Attend future Dayton Parkway Interchange open houses
- Complete a comment card



CITY OF Dayton
Live the difference.

Informational Meeting
November 26, 2018

Comments
Please print legibly:

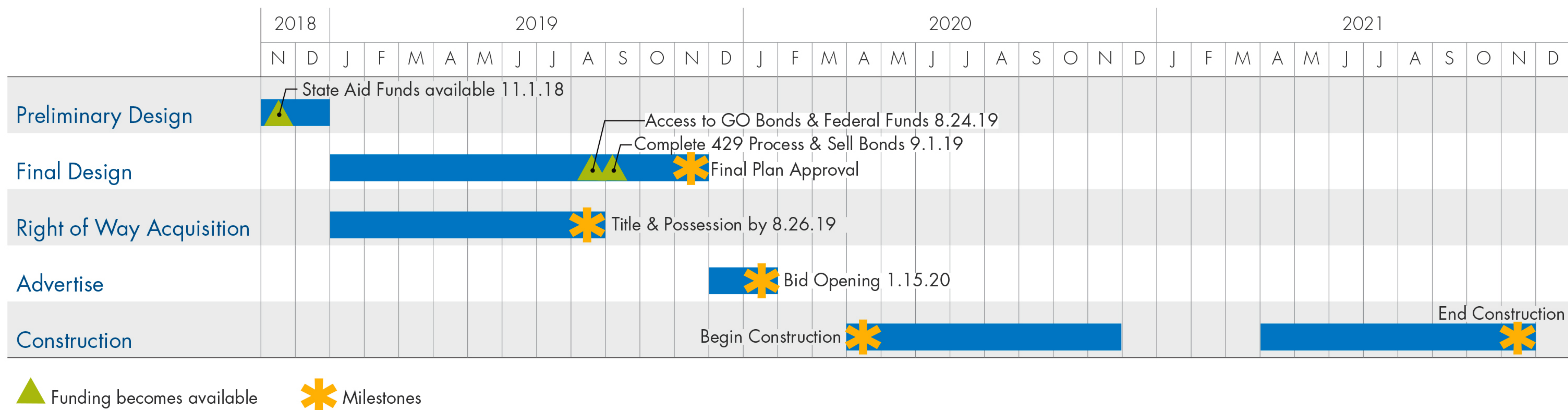
Name _____

Phone _____

Email _____

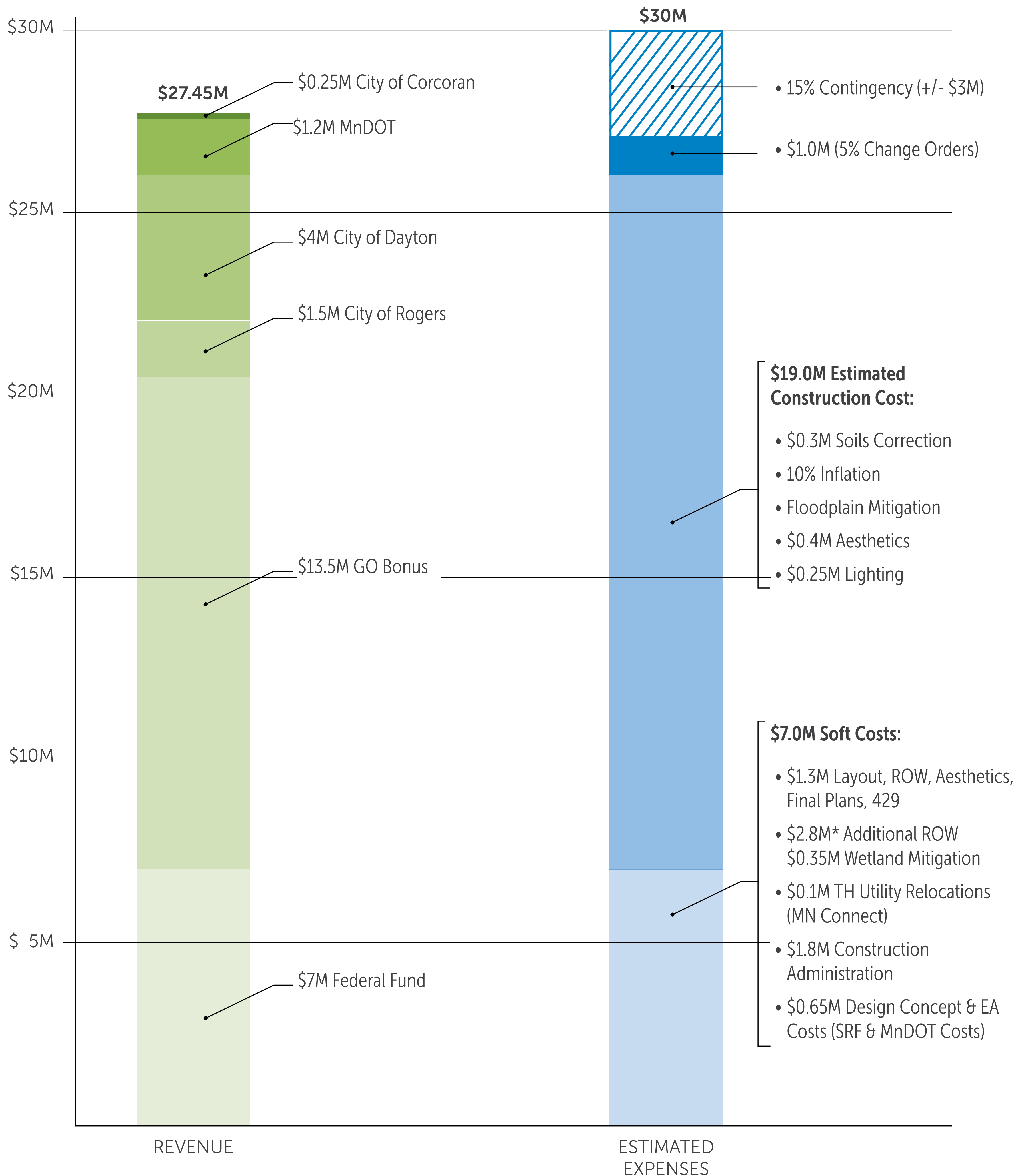
☐ Sign me up for project updates.

Proposed schedule



The goal is to have plans ready to bid by January 2020; construction would begin in the spring of 2020 and would be coordinated with MnDOT's I-94 project. The interchange would be open with the completion of the I-94 work in the fall of 2021.

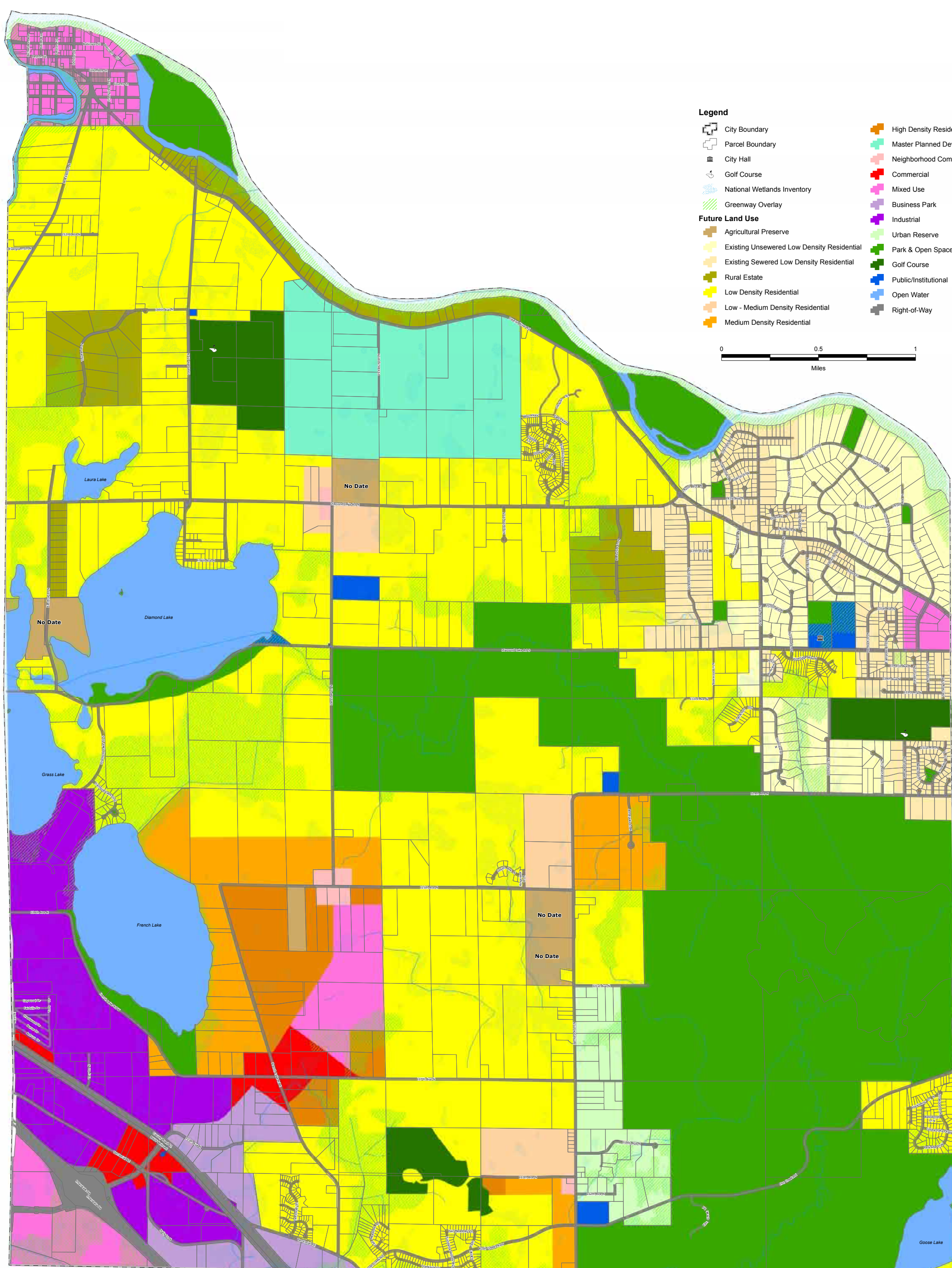
Revenue vs cost



The City of Dayton has worked hard with its partners to garner the necessary revenues and to minimize costs for this important infrastructure investment. The City will continue to look for ways to minimize costs while ensuring that the final outcome will be a valuable asset for the community and region. MnDOT has also contributed \$3M+ for an eastbound auxiliary lane on I-94.

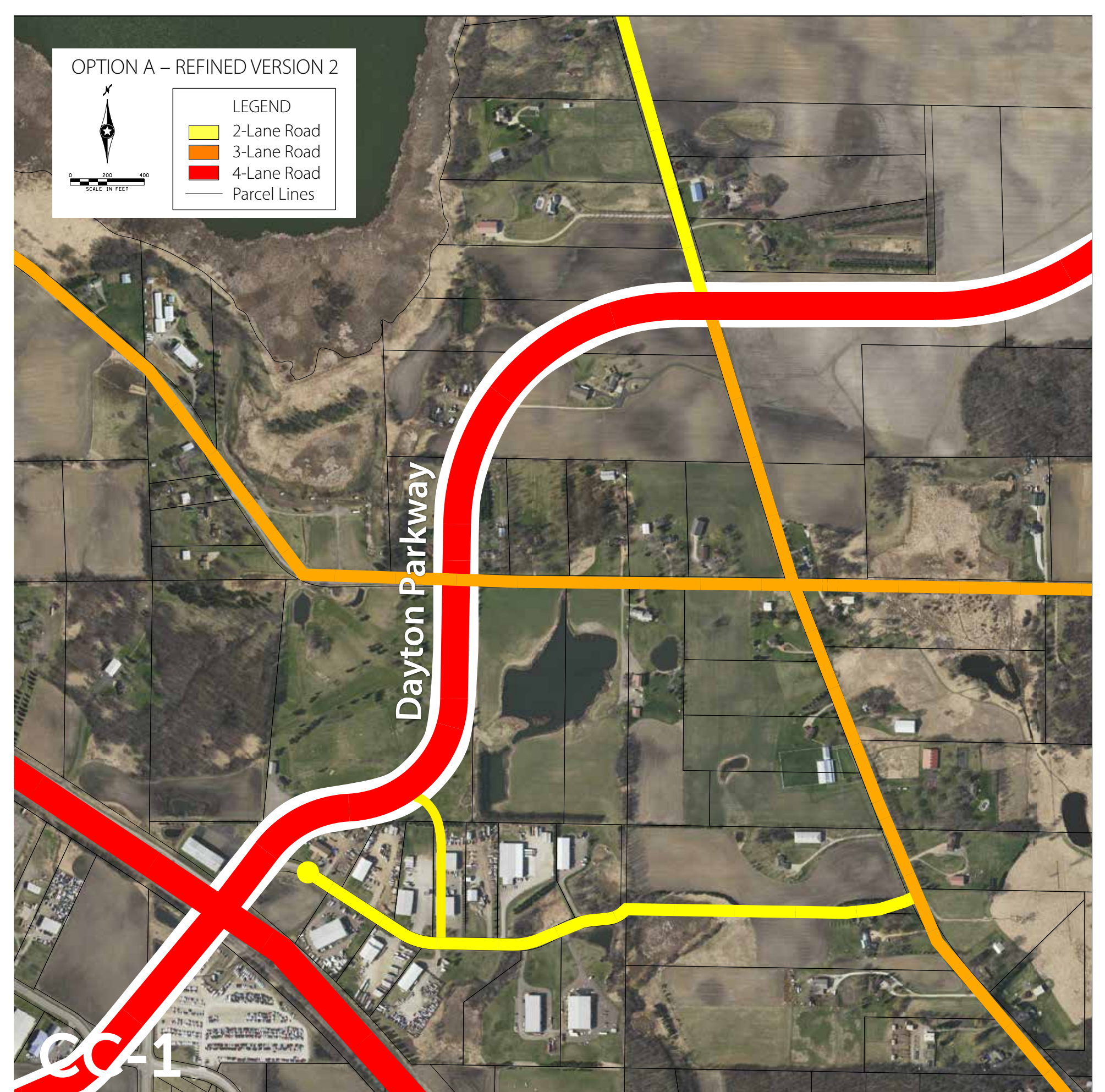
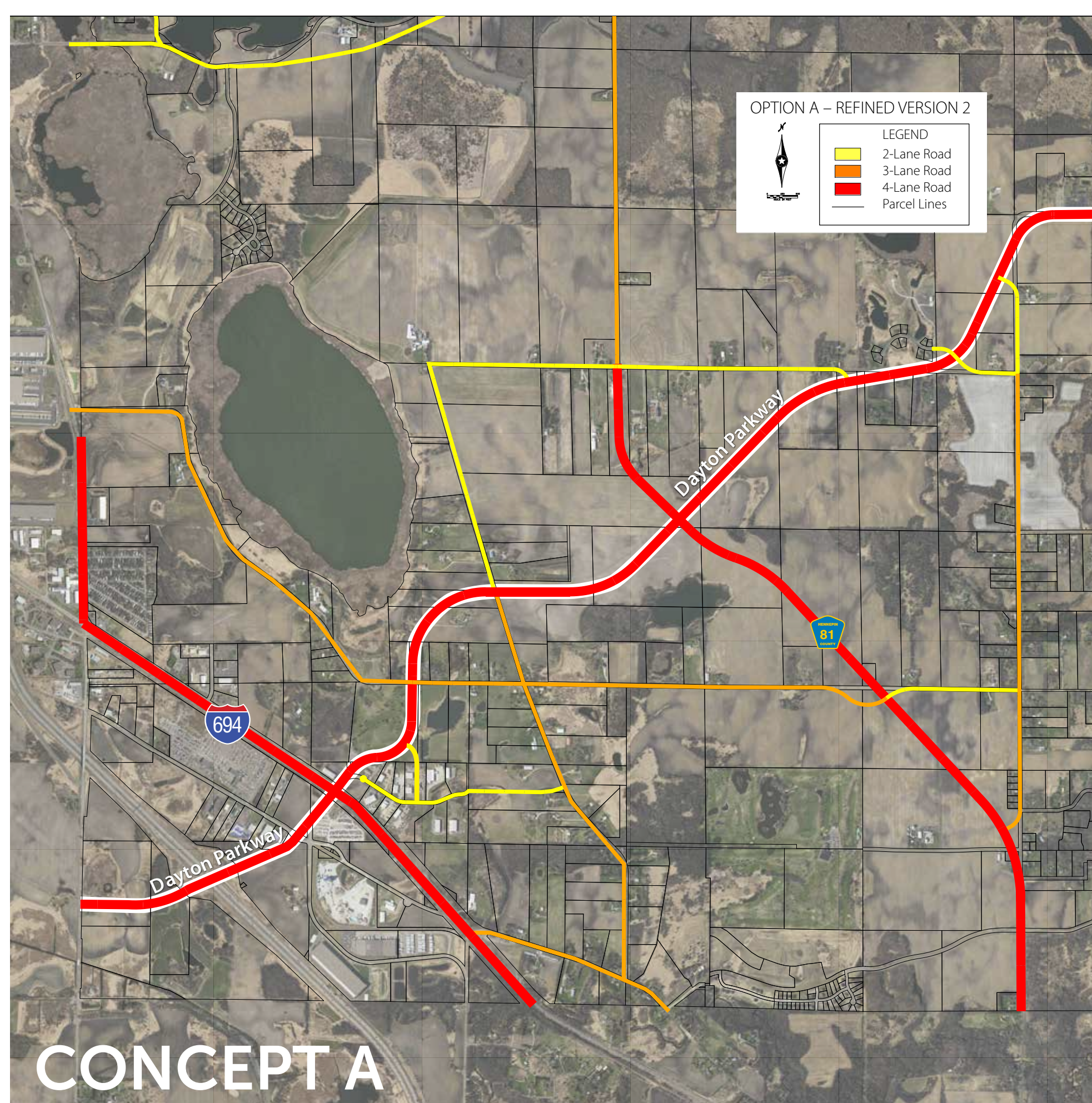
Local context

Future land use



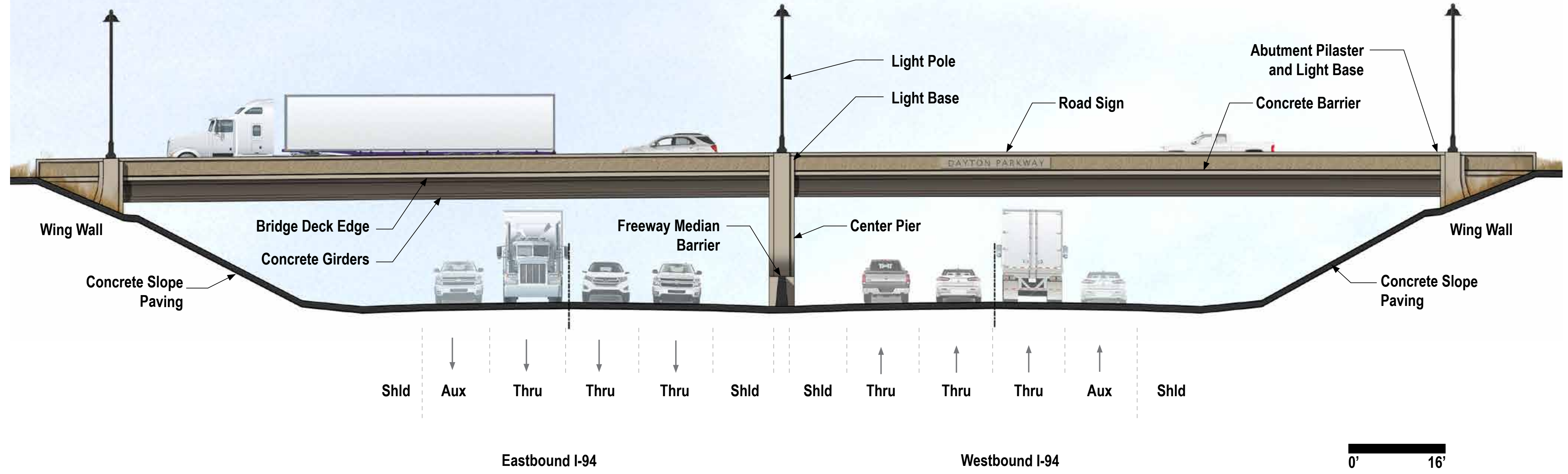
The Dayton Parkway Interchange and its connections need to fit within the future land use and arterial system plans. The City is currently refining its comprehensive plan and recommending Concept A and CC 1 (City Center-1) to move forward into the comprehensive plan. These options are a further refinement to the arterial concept in the current comprehensive plan.

Arterial system concepts

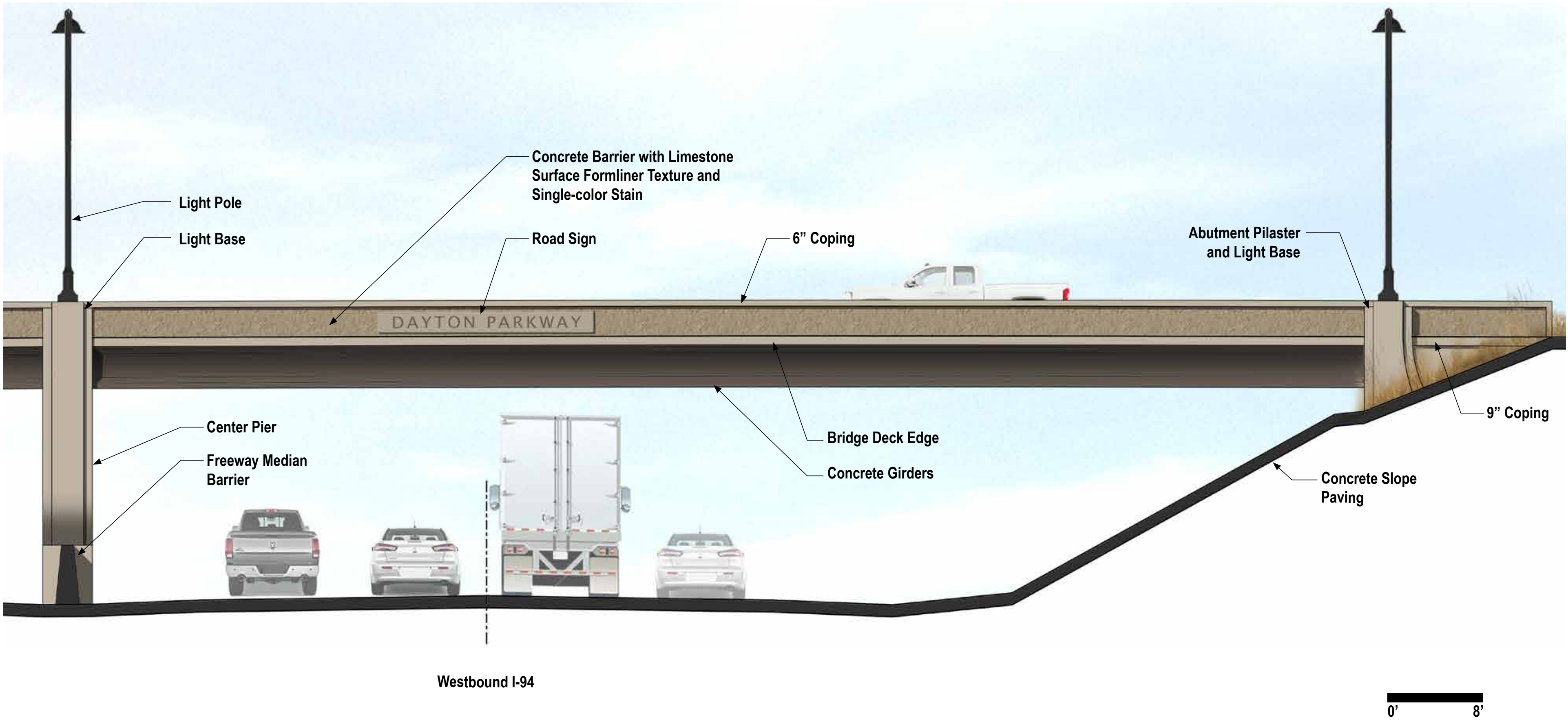


Bridge Aesthetics

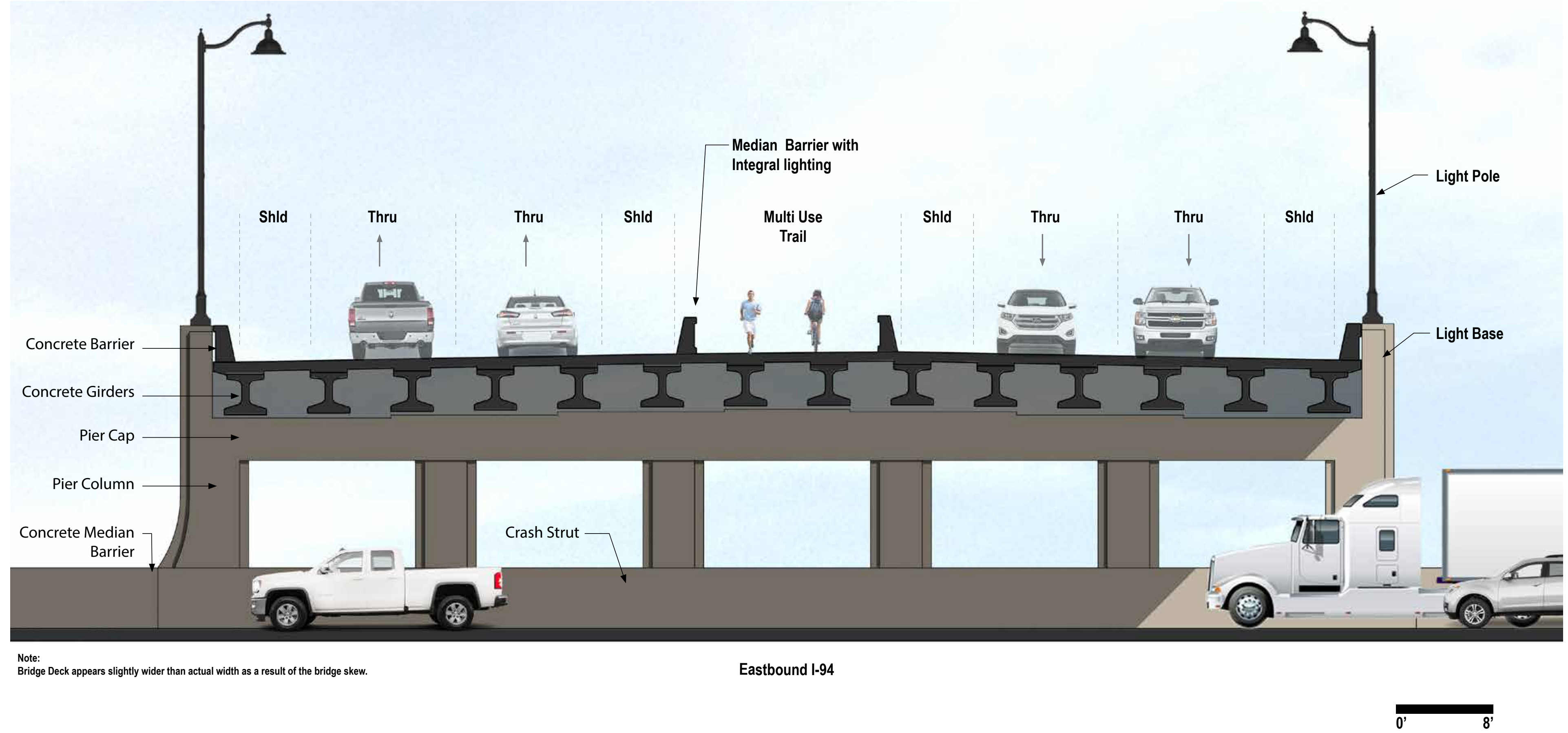
Overall Bridge Elevation



Enlarged Bridge Elevation



Bridge Pier Elevation & Deck Cross Section

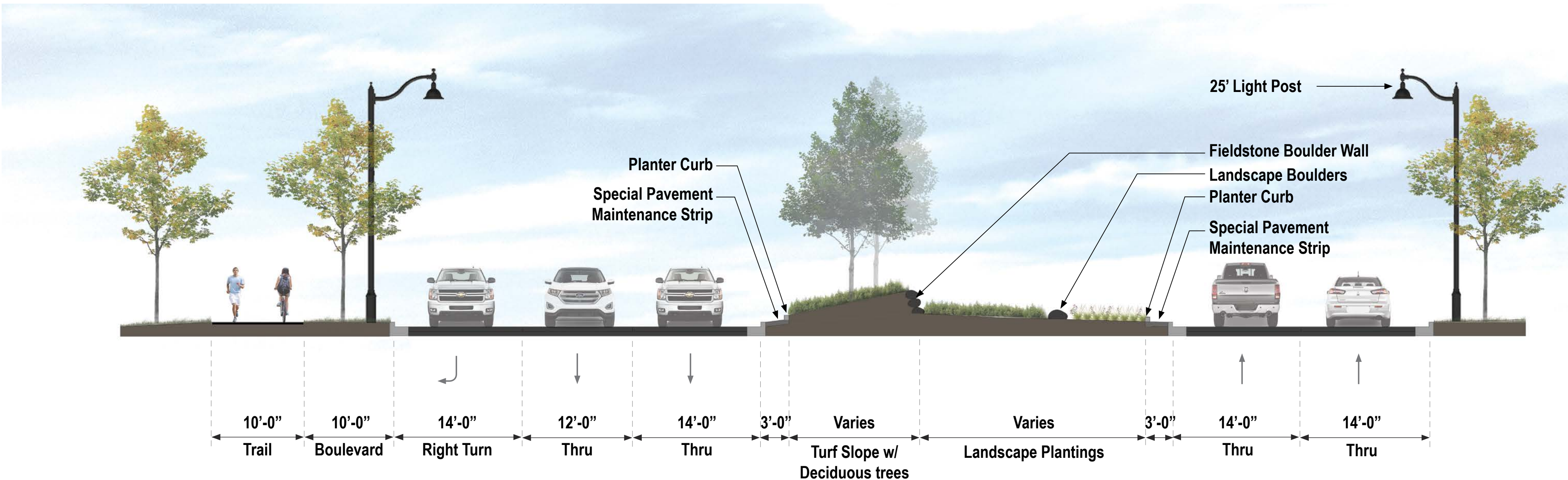


Parkway Aesthetics

Holly Lane Gateway Perspective



Parkway Cross Section 1



Parkway Cross Section 2

